

# CH65 Long Boom 14950mm

Parts list no. **P0028-30005-U08**

2008-06-12

Assembly draw.no. P0028-30004-U08 Page 1/4-3/4

Pos	Number	Part no	Description	Comment	Wender
1	1	CH65-20120	Boom, Long with attachment		OVAB
2	2	257-4890	Bearing		CAT
3	2	B2U 145x170x13	Simmerring		SPECMA
4	2	4i-3183	Washer t=7	CAT-Group	CAT
5	2	MC6S M24x50_12.9	Screw		OVAB
6	2	BRB for M24 hardened	Washer		OVAB
8	1	257-5450	Pin	Boom foot	CAT
9	2	200-6169	Shim 0,5	Boom top	CAT
10	1	200-6170	Shim 1,0	Boom top	CAT
11	2	200-6171	Shim 2,0	Boom top	CAT
12	3	093-0377	Spacer 14,0mm THK	Boom foot	CAT
13	0-2	P0028-33306	Shim t=5 Dy/di 208/147		OVAB
14	0-2	P0028-33307	Shim t=6 Dy/di 208/147		OVAB
20	4	P0028-31204	Pin		OVAB
22	2	204-2822	Cylinder, Boom	Belongs to CAT-group 204-2820 and 204-2821	CAT
23	2	208-1923	Cover	CAT-Group	CAT
24	1	208-1922	Pin		CAT
26	6	MC6S M24x60 12.9	Screw		OVAB
27	1	OFWEEU-12-12	Adaptor	Boom cylinder	SPECMA
28	1	P0028-33256	Hose		SPECMA
29	1	P0028-33255	Tube assembly-REWORK		SPECMA
30	2	196-4120	Cylinder, Dipper arm		CAT
31	2	CH65-20100	Pin Ø100		OVAB
32	0 - 2	P0028-33314	Shim t=1 Ø100,5xØ150		OVAB
33	0 - 4	P0028-33315	Shim t=2 Ø100,5xØ150 t=2		OVAB
34	4	MC6S M30x90 12.9	Screw		OVAB
35	4 - 6	CH65-20111	Washer Ø100,5xØ150 t=6		OVAB
36	4	CH65-20112	Cover		OVAB
37	12	MC6S M12x35 12.9	Screw		OVAB
38	2	9X-4547	Sealing		CAT
39	2	232-7310	Tube assembly	8x, M6S M12x70// 2x, Seal /8x, Washer13x24x2,5	CAT
40	4	207-6539	Support LH/RH		CAT
41	8	M6S M10x30 fzb	Screw		OVAB
42	4	7Y-3732	Clip		CAT
43	8	brb 10,5x20x2 fzb	Washer		OVAB
44	4	M6S M12x35 fzb	Screw		OVAB
50	8	P0028-33303	Brace		OVAB
51	1	P0028-33301	Brace		OVAB
52	2	P0028-33114	Brace		OVAB
53	120	brb17x30x3 fzv	Washer		OVAB
54	110	M6S M16x40 fzb	Screw (at boom)		OVAB
55	20	128-7514	Clip D50-singel type		CAT
56	38		Clip D38-double	Rework to smaller diam.124-0971	CAT
57	8	295-2635	Clip D38-singel		CAT
58	12	M6S M6x60 fzv	Screw		OVAB
59	24	116-3157	Clip D25-double		CAT
60	24	MC6S M10x35 fzv	Screw		OVAB
61	1	P0028-31132	Attachment, M16c/c51mm	to be weld on Mainfold bracket	OVAB
62	1	P0028-33213-50	Hose	L=1250mm 1 1/2"SAE6000+1 1/2"SAE3000	SPECMA
63	1	P0028-33247	Tube assembly		SPECMA
64	1	P0028-33221	Hose	L=1990mm 1 1/2"SAE 9000	SPECMA
65	1	P0028-33265	Tube assembly		SPECMA
66	2	P0028-33129-50	Hose	L=1250mm 1 1/2"SAE 6000psi	SPECMA
67	1	P0028-33264	Tube assembly		SPECMA
68	1	P0028-33261	Tube assembly		SPECMA
70	1		Connection block		SPECMA
71	2	M6S M8x25 fzv	Screw		OVAB
72	1	P0028-33262	Tube assembly		SPECMA
73	1	P0028-33263	Tube assembly		SPECMA
74	2	GE-30S	Adaptor		SPECMA
75	3	EVW-30S	Adaptor elbow		SPECMA
77	2	P0028-33162	Hose	L=1100mm 1"SAE 3000psi+ Pipe fitting	SPECMA
80	2		Split flange		SPECMA
81	4		Washer		SPECMA
82	4		Screw		SPECMA
84	20	5P-8077	Split flange	1 1/2"SAE 9000psi	CAT
85	32	9X-8257	Washer		CAT
86	32	8T-4140	Screw	(M6S M16x75 FeC2) 10.9	CAT

# CH65 Long Boom 14950mm

87	4	8600-24	Split flange	1 1/2"SAE 6000psi	SPECMA
88	8	M6S M16x60-12.9fzv	Screw		
89	4	2133-16	Split flange	1"SAE 3000psi	SPECMA
90	4	218-1223	Hose	1 1/2"SAE 9000psi	CAT
91	8	1P-3705	Sealing, ring	1 1/2"SAE 9000psi	CAT
92	1	P0028-33213	Tube assembly		SPECMA
93	1	P0028-33214	Tube assembly		SPECMA
94	1	P0028-33215	Tube assembly		SPECMA
95	1	P0028-33216	Tube assembly		SPECMA
96	8	P0028-33157	Hose	L=1250mm 1 1/4"SAE 6000	SPECMA
97	2	P0028-33239	Tube assembly		SPECMA
98	1	P0028-33232	Tube assembly		SPECMA
99	1	P0028-33235	Tube assembly		SPECMA
100	1	P0028-33233	Tube assembly		SPECMA
101	1	P0028-33234	Tube assembly		SPECMA
102	2	P0028-33209	Hose	L=1710mm SAE psi+ Pipe fitting	SPECMA
103	36	2136-20	Split flange	1 1/4"SAE 6000	SPECMA
104	72	MC6S M14x60	Screw		SPECMA
110	2	P0028-33191	Mainfold		OVAB
111	4	13x24x2,5 200Hv	Washer		
112	4	M6S M12x80 fzb	Screw		
113	2	P0028-33200	Tube assembly		SPECMA
114	40	MC6S M12x40	Screw		
115	24	TSLK5030PP	Clamp Ø30		SPECMA
116	24	DPAL5S	Cover plate		SPECMA
117	4	M6S M10x70 fzv	Screw		SPECMA
118	2	SPAL 5S	Weld plate (heavy)		SPECMA
119	12	M6S M10x80 fzb	Screw		SPECMA
120	2	P0028-33208	Hose	L=1340mm 1"SAE 6000+ 1"SAE 3000psi	SPECMA
121	1	P0028-33206	Hose	L=1140mm 1"SAE 6000psi	SPECMA
122	1	P0028-33207	Hose	L=1140mm 1"SAE 6000psi	SPECMA
123	16	2136-16	Split flange	1"SAE 3000psi	SPECMA
130	2	P0028-33165	Hose	L=2400mm	SPECMA
131	2	GR25-16S	Adaptor		SPECMA
132	2	P0028-33201	Tube assembly		SPECMA
133	4	P0028-33204	Hose	L=1365mm Pipe fitting	SPECMA
134	4	P0028-33238	Tube assembly		SPECMA
135	2	P0028-33236	Tube assembly		SPECMA
136	2	P0028-33205	Hose	L=1765mm Pipe fitting	SPECMA
140	1	P0028-33250	Hose	L=11550	SPECMA
141	2	P0028-33269	Hose, long boom	L=13000mm	SPECMA
142	2	P0028-33168	Hose	L=1950mm	SPECMA
143	2	P0028-33260	Hose	L=1600mm 3/8", 100bar	SPECMA
144	2	P0028-33170	Hose	L=1650mm	SPECMA
145	1	P0028-33166	Hose	L=3050mm	SPECMA
146	1	P0028-33257	Hose	L=200mm 3/8", 100bar	SPECMA
147	1	P0028-33258	Hose	L=1400mm 1/2", 100bar	SPECMA
148	1	P0028-33259	Hose	L=1800mm 1/2", 100bar	SPECMA
150	2	OFGE-08-08ED	Adapter G1/2-13/16orfs		SPECMA
151	1	VU-12	Non-return valve	G1/2" 0,35bar	SPECMA
153	5	OFGEU-06-06	Adaptor		SPECMA
154	3	OFEVL-06	Adaptor		SPECMA
155	2	P0028-33254	Adaptor with orifice 0,7mm		SPECMA
156	2	OFGEU-06-08	Adaptor		SPECMA
157	1	OFT-08	Adaptor		SPECMA
158	1	OFEVL-08	Adaptor		SPECMA
159	1	OFEVGE-06-06	Adaptor		SPECMA
160	1	147427	Adapter		SPECMA
161	1	BU-14-5bar	Non-return valve	5bar	SPECMA
162	1	OFGE-06-04	Adaptor		SPECMA
163	1	OFEVT-06	Adaptor orfs		SPECMA
164	2	OFGEU-08-06	Adaptor		SPECMA
165	1	OFEVW-06	Adaptor		SPECMA
166	1	P0028-33308	Pilot manifold complete		OVAB

# CH65 Long stick 11900mm

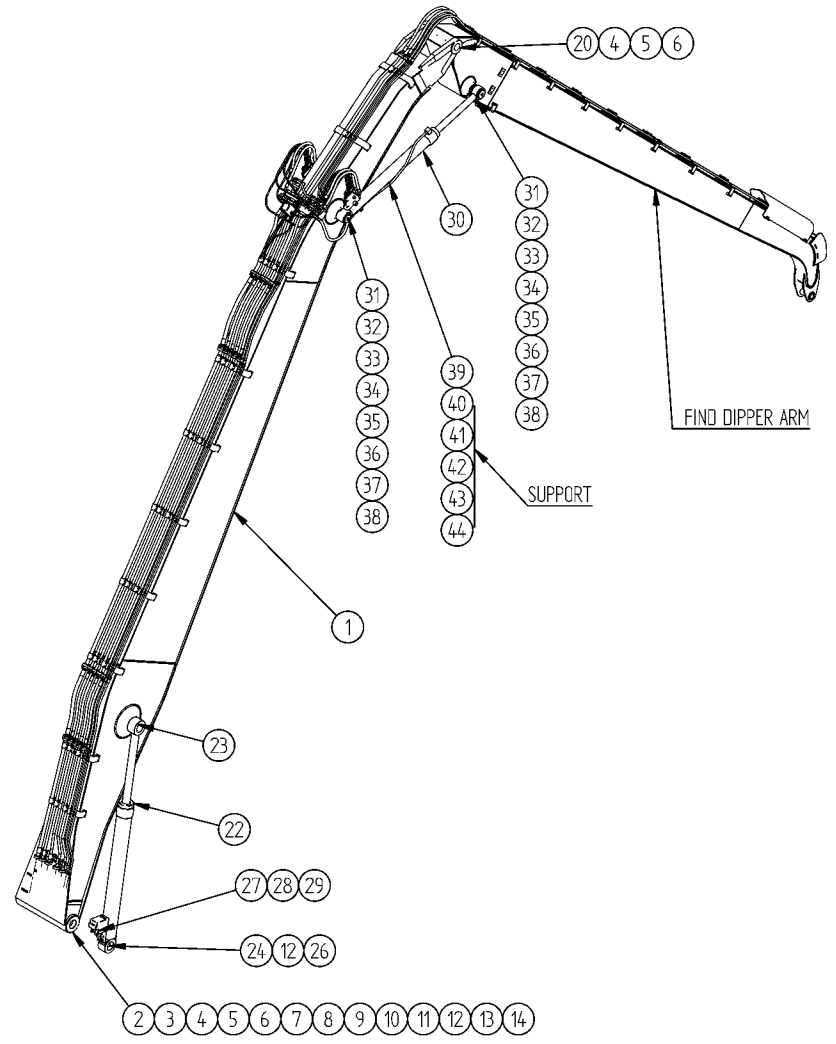
Parts list no. **P0028-30005-U08**

Assembly draw.no. P0028-30004-U08 Page 4/4

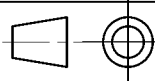
2008-06-12

Pos	Number	Part no	Description	Comment	Wender
1	1	CH65-20143	Dipper arm, long		OVAB
2	2	9T-8511	Bearing-sleeve		CAT
3	2	9x-4599	Seal D120		CAT
4	1	CH65-20142	Pin		OVAB
5	2	KM13	Nut M65x2		OVAB
6	2	220435	Bearing 75/70 x80-WB802		OVAB
7	1	P0028-33108	Brace		OVAB
8	1	P0028-33107	Brace	See draw. P0028-33101	OVAB
9	1	S0028-33245	Brace	See draw. P0028-33101	OVAB
10	1	P0028-33244	Brace	See draw. P0028-33101	OVAB
11	1	P0028-33243	Brace	See draw. P0028-33101	OVAB
12	1	P0028-33242	Brace	See draw. P0028-33101	OVAB
13	1	P0028-33241	Brace	See draw. P0028-33101	OVAB
14	1	P0028-33240	Brace	See draw. P0028-33101	OVAB
15	1	P0028-33102	Brace	See draw. P0028-33101	OVAB
16	1	P0028-33101	Brace		OVAB
17	1	P0028-33305	Protection cover		SPECMA
18	40	brb17x30x3 fzv	Washer		
19	32	M6S M16x40 fzv	Screw		
20	8	M6S M16X45 fzv	Screw		SPECMA
22	1	S0028-33227	Tube assembly		SPECMA
23	1	S0028-33228	Tube assembly		SPECMA
24	1	S0028-33181	Tube assembly		SPECMA
25	1	S0028-33183	Tube assembly		SPECMA
26	2	143859	Fitting		SPECMA
27	2	BKH-25S	Fitting		SPECMA
28	2	140210Y	Hydraulic nut		SPECMA
29	2	140660	Plug		SPECMA
30	20	50-5030PP	Clamp D30		SPECMA
31	20	DEPL 5S	Cover plate		SPECMA
32	40	M6S M10x50 FeC2	Screw		OVAB
35	1	S0028-33229	Tube assembly		SPECMA
36	1	S0028-33230	Tube assembly		SPECMA
37	1	S0028-33185	Tube assembly		SPECMA
38	1	S0028-33187	Tube assembly		SPECMA
39	2	143867			SPECMA
40	2	BKH-30S	Fitting		SPECMA
41	2	140228	Hydraulic nut		SPECMA
42	2	140670	Plug		SPECMA
43	20	P0028-33117	Spacer		OVAB
44	20	116-3157	Clip D25-double		CAT
45	20	M6S M10x80 fzb	Screw		SPECMA

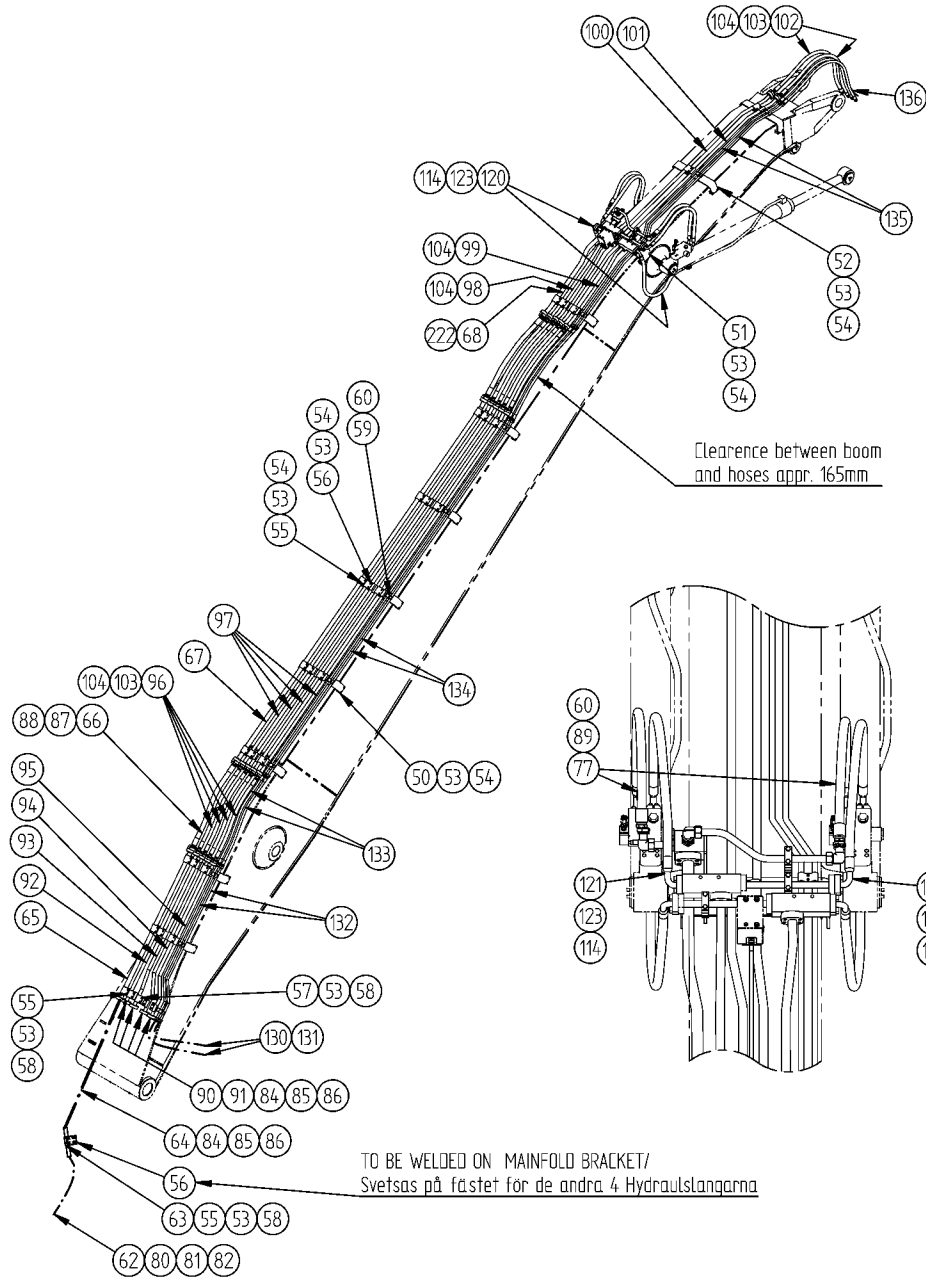
Issue/Utg	Locat/Plac	Modification/Ändring	Sign	ECN No.	Date/Datum
U08	sheet 4	Posballoon corrected as 39 (was wrongly 37) sheet4/4	nih	-	08-04-01



Part List No.	Subject	Comments
P0028-30005	Long Boom + Long Dipper arm	
P0028-30006	Short Boom + Short Dipper arm	
-		
-		
-		

Pos	Number	Part number/Artikelnr.	Material	Remarks/Anmärkning
Ref				
<p><b>Notice</b></p> <p>This drawing must not be copied, nor shown to any third party, nor wrongfully used. Any infringement of these provisions will bring an action according to law in force.</p> <p>Denna handling får ej kopieras, delgivas annan eller eljest obehörigen användas. Övertredelse beivras med stöd av gällande lag.</p>				
 <p>First angle projection/ Första vinkelns projektion ISO 128:1982</p>		<p>CAD Program <b>SolidEdge</b></p> <p>Weight/Vikt (Kg) -</p> <p>Replaces/Ersätter -</p> <p>Compare/Jämför -</p> <p>Scale/Stora -</p>		
<p>Sign Date/Datum</p> <p><i>Nina Häkansson</i> 2008-04-01</p>		<p>Checked/Kontroll. ---</p> <p>Approved/Godkänd ---</p>		<p>Name <b>Assembly drawing</b></p> <p>Name <b>Tube and Hose Assembly</b></p> <p>CH65</p>
<p>Drawing No./Ritningsnr <b>P0028-30004</b></p>		<p>Sheet/Blad <b>1/4</b></p>	<p>Issue/Utgåva <b>U08</b></p>	





Issue/Utg.	Locat./Plac.	Modification/Ändring	Sign.	EEN No.	Date/Datum
U08	sheet 4	Posballon corrected as 39 l/was wrongly 37l sheet4/4	nih	-	08-04-01

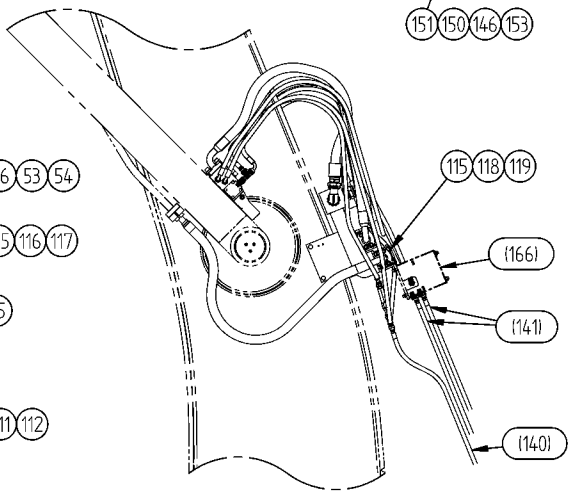
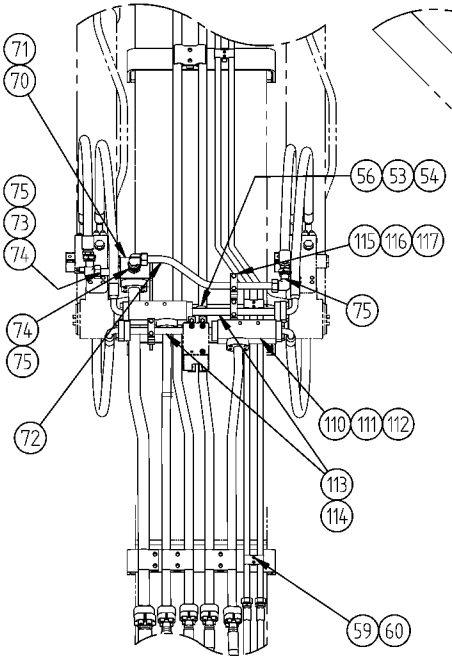
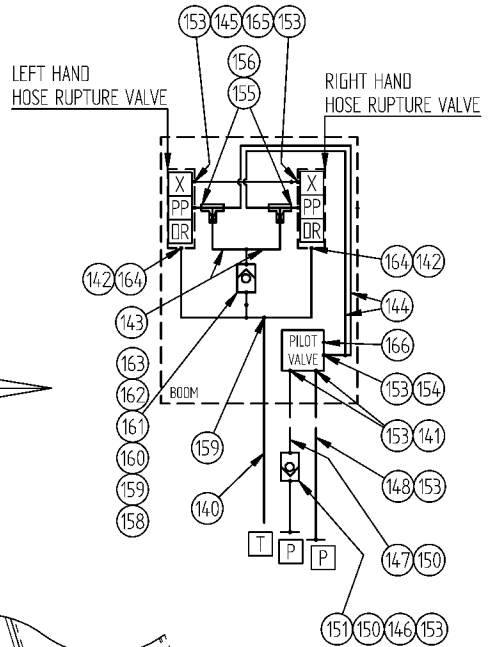
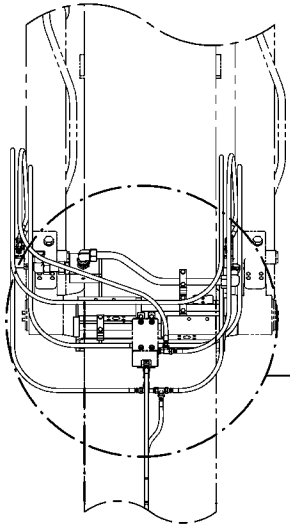
Part List No.	Subject	Comments
P0028-30005	Long Boom + Long Dipper arm	
P0028-30006	Short Boom + Short Dipper arm	
-		
-		
-		

Pos	Number	Part number/Artikelnr.	Material	Remarks/Anmärkning
Ref				
<b>Notice</b>		CAD Program		
This drawing must not be copied, nor shown to any third party, nor wrongfully used. Any infringement of these provisions will bring an action according to law in force.		SolidEdge		
Denna handling får ej kopieras, delgivas annan eller eljest obehörigen användas. Övertäckelse beivras med stöd av gällande lag.		Weight/Vikt [Kg]		
		-		
		Replaces/Erstatter		
		-		
		Compare/Jämför		
		-		
		Scale/Skala		
		-		
		ISO 128:1982		
Sign	Drawn/Ritad	Checked/Kontroll	Approved/Godkänd	
Date/Datum	Nina Häkansson	---	---	
	2008-04-01	00----	00----	
Drawing No./Ritningsnr		Sheet/Blad	Issue/Utgåva	
P0028-30004		2/4	U08	



Name: Assembly drawing  
 Namn: Tube and Hose Assembly  
 CH65

Issue/Utg	Locat./Plac	Modification/Ändring	Sign	ECN No.	Date/Datum
U08	sheet 4	Posballoon corrected as 39 (was wrongly 37) sheet 4/4	nih	-	08-04-01

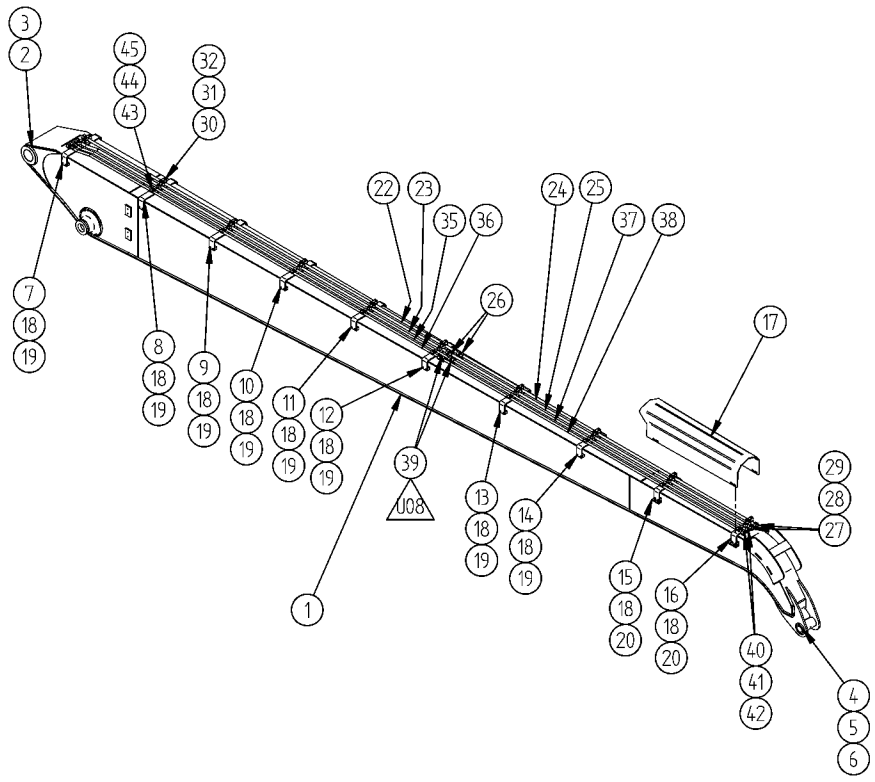


Part List No.	Subject	Comments
P0028-30005	Long Boom + Long Dipper arm	
P0028-30006	Short Boom + Short Dipper arm	
-		
-		
-		


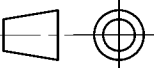
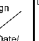
Pos	Number	Part number/Artikelnr	Material	Remarks/Anmärkning
Ref				
<b>Notice</b>		CAD Program		 <b>Viking Engineering i Malmö AB</b>
This drawing must not be copied, nor shown to any third party, nor wrongfully used. Any infringement of these provisions will bring an action according to law in force.		SolidEdge		
Denna handling får ej kopieras, delgivas annan eller enligt obehörigen användas. Överträdelser beivras med stöd av gällande lag.		Weight/Vikt [kg]		
		Replaces/Erstär		Name
		Compare/dämför		Name
		Scale/Skala		Assembly drawing
		ISO 128:1992		Tube and Hose Assembly
		First angle projection/ Första vinkelns projektion		CH65
		Approved/Godkänd		Drawing No./Ritningsnr
Sign	Drawn/Ritad	Checked/Kontroll.	Approved/Godkänd	Sheet/Blad
Date/Datum	Nina Hökansson 2008-04-01	---	---	Issue/Utgåva
		00----	00----	P0028-30004
				3/4
				U08

F  
E  
D  
C  
B  
A

Issue/Utg	Locat/Plac	Modification/Ändring	Sign	ECN No.	Date/Datum
U08	sheet 4	Posballoon corrected as 39 (was wrongly 37) sheet4/4	nih	-	08-04-01



Part List No.	Subject	Comments
P0028-30005	Long Boom + Long Dipper arm	
P0028-30006	Short Boom + Short Dipper arm	
-		
-		
-		

Pos	Number	Part number/Artikelnr.	Material	Remarks/Anmärkning
Ref				
<b>Notice</b> This drawing must not be copied, nor shown to any third party, nor wrongfully used. Any infringement of these provisions will bring an action according to law in force.  Denna handling får ej kopieras, delgivnas annan eller eljest obehörigen användas. Övertredelse beivras med stöd av gällande lag.		CAD Program <b>SolidEdge</b>  Weight/Vikt [Kg] -  Replaces/Erstatter -		 <b>Viking Engineering i Malmö AB</b>  Name Assembly drawing  Namn Tube and Hose Assembly  CH65
 First angle projection/ Första vinkelns projektion ISO 128:1982		Compare/Jämför -  Scale/Ståla -		
Sign  Date/Datum 2008-04-01	Drawn/Ritad <b>Nina Häkansson</b> 2008-04-01	Checked/Kontroll. --- 00----	Approved/Godkänd --- 00----	
Drawing No./Ritningsnr <b>P0028-30004</b>			Sheet/Blad <b>4/4</b>	Issue/Utgåva <b>U08</b>