

**ENGINE**

Model	Isuzu AL-6HK1X Tier 4 Interim Certified (Cooled EGR)	
Fuel	Requires ultra low-sulfur fuel B5 biodiesel tolerant	
Type	Water-cooled, 4-cycle, high pressure common rail system. Turbo-charged with air cooled intercooler, DPD system	
Cylinders	6-cylinder in-line	
Displacement	475 cu in (7.8 L)	
Bore/stroke	4.53 x 4.92 in (115 x 125 mm)	
Fuel injection	Direct injection (electronic)	
Fuel filter	Replaceable, full flow spin-on cartridge	
Air filter	Dry type element w/ warning restriction indicator	
Oil filter	Replaceable, full flow spin-on cartridge	
Engine oil operating angle ratings:	Rated 35°	
Side-to-side	Rated 35°	
Fore and aft	Rated 35°	
Net horsepower – SAE J1349	207 hp (154 kW) @ 1800 RPM	
Net maximum torque – SAE J1349	670 lb-ft (909 N-m) @ 1500 RPM	
Cooling	110° to -13° F (43° to -25° C) at 55% concentration	
Oil	Requires low-ash oil (CJ-4)	

**SERVICE CAPACITIES**

Fuel tank	119 gal (450 L)
Hydraulic system	79 gal (300 L)
Hydraulic tank	39 gal (147 L)
Engine oil w/filter	10.3 gal (39 L)
Swing drive	8.3 qt (7.9 L)
Final drive (each side)	9.6 qt (9.1 L)
Cooling system	8.1 gal (30.8 L)

**ELECTRICAL**

Voltage	24 volts
Alternator rating	50 amp
Batteries	2 x 12 volt
Battery reserve capacity	128 Ah / 5 hour
Work lights (2)	24 Volt / 70 watt (1 x boom; 1 x upper)

**SWING MECHANISM**

Swing speed	0 - 10.0 RPM
Swing torque	68,200 lb-ft (92 400 N-m)
Swing brake	Mechanical disc

**UNDERCARRIAGE**

Undercarriage length	15 ft 11 in (4.85 m)
Track gauge	8 ft 6 in (2.6 m)
Carrier rollers	2 per side
Track rollers	9 per side
Shoes –	
Triple grouser	50 per side
Shoe width (std.)	31.5 in (800 mm)
Link pitch	8.0 in (203 mm)
Track –	
Chain	Grease lubricated / strutted
Guides	Double
Adjustment	Hydraulic

**GROUND PRESSURE**

@ Standard operating weight	6.29 psi (0.43 bar)
w/ 31.5 in (800 mm) triple semi-grouser shoes	

**HYDRAULICS**

System design	Open Center
Main pumps	Two variable displacement / axial piston Max. rated flow: 2 x 64.2 gpm (2 x 243 L/min)
System pressures –	
Boom, arm & bucket	4,970 psi (350 bar)
Boom, arm & bucket w/ power boost	5,410 psi (380 bar)
Travel circuits	4,970 psi (350 bar)
Swing circuits	4,260 psi (300 bar)
Pilot pump	1 x gear design Max. capacity: 7.1 gpm (27.0 L/min.)

Controls with boom/arm holding valve	
Right track travel, bucket, boom and arm acceleration	Four-spool section
Left track travel, auxiliary, swing, boom acceleration	Five-spool section
Work Mode selections –	SP: Speed Priority H: Heavy Duty A: Automatic
Swing motor	Fixed displacement axial piston
Swing final drive	Planetary gear reduction
Travel motor	Two-speed independent travel / axial piston

**HYDRAULIC CYLINDERS**

Boom cylinder	Two (2)
Bore diameter	5.5 in (140 mm)
Rod diameter	3.7 in (95 mm)
Stroke	53.9 in (1369 mm)
Arm cylinder	One (1)
Bore diameter	5.9 in (150 mm)
Rod diameter	4.1 in (105 mm)
Stroke	61.8 in (1569 mm)
Bucket cylinder	One (1)
Bore diameter	5.3 in (135 mm)
Rod diameter	3.5 in (90 mm)
Stroke	42.4 in (1078 mm)

**DRIVETRAIN**

Travel control –	Dual stage relief / counter balance design Single pedal travel / straight travel
Brakes	Mechanical disc
Service brakes	SAHR disc (each motor)
Two speed travel –	Automatic downshift
Max high speed	3.4 mph (5.4 kph)
Max. low speed	2.0 mph (3.2 kph)
Drawbar pull	52,400 lbf (233 kN)
Gradeability	70% (35°)

**CAB AND CONTROLS**

Air-conditioner output	18,100 BTU/hr
Heater output	20,150 BTU/hr
Sound level – ISO6395 (inside cab)	70.5 dBA
Electrical outlet	12 volt
Cab interior light (1)	10 watt
Rear-view Camera (1)	Standard
Seat	Air-suspension

**ATTACHMENT**

Boom	20 ft 2 in (6.15 m)
Arm options	10 ft 5 in (3.18 m) 8 ft 8 in (2.65 m) 12 ft 0 in (3.66 m)
Bucket digging force *	39,250 lbf (174.6 kN)
w/ Auto Power-Boost	42,760 lbf (190.2 kN)
* Digging force ratings based on ISO6015	

**OPERATING WEIGHT**

Operating weight	65,900 lb (29 900 kg)
w/ shoes	31.5 in (800 mm)
w/ boom	20 ft 2 in (6.15 m)
w/ arm	10 ft 5 in (3.18 m)
w/ bucket	1,940 lb (880 kg)
w/ counterweight	11,700 lb (5300 kg)
w/ operator, full fuel, standard equipment	

# LIFT CAPACITIES

**10 ft 5 in (3.18 m) Arm** Lift capacities calculated using a 1,778 lb (806 kg) bucket, \_\_, \_\_ lb (\_\_\_ kg) counterweight.

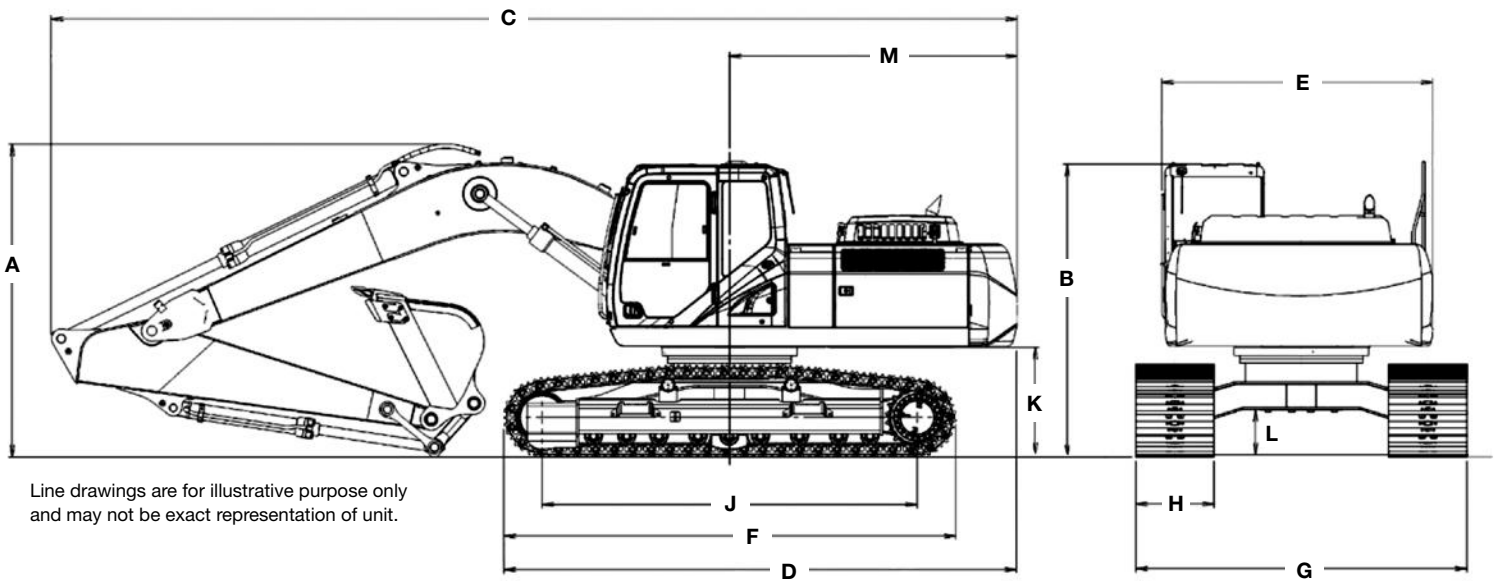
Load (Lift Point) Height	5 ft (1.5 m)		10 ft (3 m)		15 ft (4.5 m)		20 ft (6 m)		25 ft (7.5 m)		30 ft (9 m)		MAXIMUM REACH			
	END	SIDE	END	SIDE	END	SIDE	END	SIDE	END	SIDE	END	SIDE	@	END	SIDE	
+30 ft (9 m)													(7.41 m)	(3540 kg)*	(3540 kg)*	
+25 ft (7.5 m)										10,950 lbs* (4920 kg)*	10,950 lbs* (4920 kg)*		28.33 ft (8.72 m)	7,250 lbs* (3290 kg)*	7,250 lbs* (3290 kg)*	
+20 ft (6 m)										12,400 lbs* (5790 kg)*	12,350 lbs (5720 kg)	9,550 lbs* (4700 kg)*	8,850 lbs (4140 kg)	31.22 ft (9.56 m)	7,050 lbs* (3200 kg)*	7,050 lbs* (3200 kg)*
+15 ft (4.5 m)								17,550 lbs* (8090 kg)*	17,050 lbs (7900 kg)	15,750 lbs* (7260 kg)	12,000 lbs (5570 kg)	12,250 lbs* (5780 kg)*	8,700 lbs (4050 kg)	32.96 ft (10.07 m)	7,150 lbs* (3240 kg)*	7,150 lbs* (3240 kg)*
+10 ft (3 m)			39,550 lbs* (18 480 kg)*	39,550 lbs* (18 480 kg)*	27,800 lbs* (12 910 kg)*	25,850 lbs (12 000 kg)	21,100 lbs* (9750 kg)*	16,450 lbs (7640 kg)	17,450 lbs* (8090 kg)*	11,450 lbs (5330 kg)	13,000 lbs (6050 kg)	8,400 lbs (3920 kg)	33.77 ft (10.3 m)	7,400 lbs* (3370 kg)*	6,750 lbs (3060 kg)	
+5 ft (1.5 m)			17,100 lbs* (7720 kg)*	17,100 lbs* (7720 kg)*	33,500 lbs* (15 540 kg)*	24,000 lbs (11 150 kg)	24,050 lbs* (11 110 kg)*	15,500 lbs (7200 kg)	17,050 lbs (7920 kg)	10,950 lbs (5090 kg)	12,700 lbs (5900 kg)	8,150 lbs (3790 kg)	33.73 ft (10.28 m)	7,900 lbs* (3590 kg)*	6,650 lbs (3010 kg)	
Ground-line			18,750 lbs* (8280 kg)*	18,750 lbs* (8280 kg)*	35,750 lbs* (16 420 kg)*	22,700 lbs (10 550 kg)	23,600 lbs (10 990 kg)	14,750 lbs (6850 kg)	16,550 lbs (7700 kg)	10,550 lbs (4900 kg)	12,450 lbs (5780 kg)	7,900 lbs (3680 kg)	32.91 ft (10.03 m)	8,700 lbs* (3940 kg)*	6,800 lbs (3090 kg)	
-5 ft (-1.5 m)	18,400 lbs* (8220 kg)*	18,400 lbs* (8220 kg)*	24,550 lbs* (10 890 kg)*	24,550 lbs* (10 890 kg)*	35,900 lbs* (16 580 kg)*	22,300 lbs (10 370 kg)	23,150 lbs (10 780 kg)	14,350 lbs (6670 kg)	16,300 lbs (7570 kg)	10,300 lbs (4780 kg)	12,350 lbs (5730 kg)	7,800 lbs (3630 kg)	31.28 ft (9.54 m)	10,000 lbs* (4520 kg)*	7,350 lbs (3320 kg)	
-10 ft (-3 m)	23,700 lbs* (10 640 kg)*	23,700 lbs* (10 640 kg)*	32,850 lbs* (14 530 kg)*	32,850 lbs* (14 530 kg)*	34,300 lbs* (15 850 kg)*	22,450 lbs* (10 440 kg)*	23,150 lbs (10 780 kg)	14,400 lbs (6690 kg)	16,350 lbs (7590 kg)	10,350 lbs (4810 kg)			28.7 ft (8.78 m)	12,300 lbs* (5520 kg)*	8,400 lbs (3790 kg)	
-15 ft (-4.5 m)	32,000 lbs* (14 240 kg)*	32,000 lbs* (14 240 kg)*	42,450 lbs* (19 680 kg)*	42,450 lbs* (19 680 kg)*	30,050 lbs* (13 970 kg)*	22,950 lbs (10 660 kg)	22,250 lbs* (10 390 kg)	14,800 lbs (6860 kg)		(7530 kg)*	(4940 kg)		24.93 ft (7.66 m)	15,300 lbs* (6950 kg)*	10,550 lbs (4720 kg)	
-20 ft (-6 m)			29,550 lbs* (14 040 kg)*	29,550 lbs* (14 040 kg)*	21,400 lbs* (10 210 kg)*	21,400 lbs* (10 210 kg)*		(6860 kg)*	(6860 kg)*				19.39 ft (6.04 m)	14,350 lbs* (6570 kg)*	14,350 lbs* (6570 kg)*	

**8 ft 8 in (2.65 m) Arm** Lift capacities calculated using a 1,914 lb (868 kg) bucket, \_\_, \_\_ lb (\_\_\_ kg) counterweight.

Load (Lift Point) Height	5 ft (1.5 m)		10 ft (3 m)		15 ft (4.5 m)		20 ft (6 m)		25 ft (7.5 m)		30 ft (9 m)		MAXIMUM REACH				
	END	SIDE	END	SIDE	END	SIDE	END	SIDE	END	SIDE	END	SIDE	@	END	SIDE		
+25 ft (7.5 m)										12,150 lbs* (5820 kg)*	12,150 lbs* (5740 kg)*		26.48 ft (8.16 m)	9,350 lbs* (4210 kg)*	9,350 lbs* (4210 kg)*		
+20 ft (6 m)								16,900 lbs*	16,900 lbs*	14,650 lbs* (6740 kg)*	12,150 lbs (5660 kg)		29.59 ft (9.06 m)	9,000 lbs* (4090 kg)*	8,900 lbs (3990 kg)		
+15 ft (4.5 m)							19,900 lbs* (9480 kg)*	19,900 lbs* (9480 kg)*	18,950 lbs* (8730 kg)*	17,050 lbs (7910 kg)	16,850 lbs* (7730 kg)*	11,750 lbs (5480 kg)	13,100 lbs (6110 kg)	8,550 lbs (3980 kg)	31.44 ft (9.6 m)	9,050 lbs* (4120 kg)*	7,800 lbs (3510 kg)
+10 ft (3 m)							29,350 lbs* (13 510 kg)*	25,350 lbs (11 760 kg)	22,250 lbs* (10 290 kg)*	16,150 lbs (7500 kg)	17,400 lbs (8090 kg)	11,300 lbs (5250 kg)	12,850 lbs (5990 kg)	8,300 lbs (3870 kg)	32.28 ft (9.84 m)	9,400 lbs* (4270 kg)*	7,250 lbs (3290 kg)
+5 ft (1.5 m)							34,050 lbs* (15 700 kg)*	23,500 lbs (10 920 kg)	24,150 lbs* (11 220 kg)*	15,250 lbs (7090 kg)	16,900 lbs (7850 kg)	10,850 lbs (5040 kg)	12,600 lbs (5860 kg)	8,050 lbs (3760 kg)	32.24 ft (9.83 m)	10,000 lbs* (4530 kg)*	7,150 lbs (3230 kg)
Ground-line			17,400 lbs* (7610 kg)*	17,400 lbs* (7610 kg)*	35,900 lbs* (16 540 kg)*	22,500 lbs (10 460 kg)	23,500 lbs (10 930 kg)	14,650 lbs (6800 kg)	16,500 lbs (7670 kg)	10,500 lbs (4870 kg)	12,400 lbs (5770 kg)	7,900 lbs (3670 kg)	31.39 ft (9.57 m)	10,950 lbs* (4960 kg)*	7,350 lbs (3330 kg)		
-5 ft (-1.5 m)	19,200 lbs* (8550 kg)*	19,200 lbs* (8550 kg)*	25,150 lbs* (11 160 kg)*	25,150 lbs* (11 160 kg)*	35,650 lbs* (16 440 kg)*	22,400 lbs (10 420 kg)	23,150 lbs (10 780 kg)	14,400 lbs (6680 kg)	16,300 lbs (7580 kg)	10,300 lbs (4790 kg)		(5760 kg)	(3670 kg)	29.67 ft (9.05 m)	12,600 lbs* (5700 kg)*	8,000 lbs (3620 kg)	
-10 ft (-3 m)	26,200 lbs* (11 730 kg)*	26,200 lbs* (11 730 kg)*	35,700 lbs* (15 780 kg)*	35,700 lbs* (15 780 kg)*	33,150 lbs* (15 330 kg)*	22,650 lbs (10 530 kg)	23,300 lbs (10 830 kg)	14,550 lbs (6750 kg)	16,500 lbs* (7660 kg)	10,550 lbs (4880 kg)			26.94 ft (8.24 m)	14,650 lbs* (6610 kg)*	9,350 lbs (4210 kg)		
-15 ft (-4.5 m)			38,050 lbs* (17 690 kg)*	38,050 lbs* (17 690 kg)*	27,750 lbs* (12 930 kg)*	23,250 lbs (10 800 kg)	20,350 lbs* (9580 kg)*	15,100 lbs (6990 kg)					22.9 ft (7.05 m)	15,400 lbs* (7010 kg)*	12,150 lbs (5420 kg)		

**12 ft 0 in (3.66 m) Arm** Lift capacities calculated using a 1,741 lb (780 kg) bucket, \_\_, \_\_ lb (\_\_\_ kg) counterweight.

Load (Lift Point) Height	5 ft (1.5 m)		10 ft (3 m)		15 ft (4.5 m)		20 ft (6 m)		25 ft (7.5 m)		30 ft (9 m)		35 ft (10.5 m)		MAXIMUM REACH		
	END	SIDE	END	SIDE	END	SIDE	END	SIDE	END	SIDE	END	SIDE	END	SIDE	@	END	SIDE
+30 ft (9 m)															26.11 ft (8.1 m)	6,600 lbs* (2950 kg)*	6,600 lbs* (2950 kg)*
+25 ft (7.5 m)									9,400 lbs* (4380 kg)*	9,400 lbs* (4380 kg)*	6,550 lbs* (3480 kg)*	6,550 lbs* (3480 kg)*			30.26 ft (9.3 m)	6,050 lbs* (2740 kg)*	6,050 lbs* (2740 kg)*
+20 ft (6 m)									11,550 lbs* (5420 kg)*	11,550 lbs* (5420 kg)*	9,550 lbs* (4500 kg)*	8,950 lbs (4190 kg)			32.95 ft (10.09 m)	5,850 lbs* (2660 kg)*	5,850 lbs* (2660 kg)*
+15 ft (4.5 m)									14,150 lbs* (6600 kg)*	12,100 lbs (5620 kg)	11,250 lbs* (5230 kg)*	8,750 lbs (4080 kg)	(2920 kg)*	(2920 kg)*	34.6 ft (10.56 m)	5,900 lbs* (2680 kg)*	5,900 lbs* (2680 kg)*
+10 ft (3 m)			20,550 lbs* (10 710 kg)*	20,550 lbs* (10 710 kg)*	25,500 lbs* (11 840 kg)*	25,500 lbs* (11 840 kg)*	19,850 lbs* (9170 kg)*	16,650 lbs (7740 kg)	16,600 lbs* (7690 kg)*	11,550 lbs (5370 kg)	13,000 lbs (6050 kg)	8,450 lbs (3930 kg)	7,100 lbs* (3810 kg)*	6,300 lbs (2950 kg)	35.36 ft (10.78 m)	6,100 lbs* (2770 kg)*	6,100 lbs* (2770 kg)*
+5 ft (1.5 m)			22,800 lbs* (9640 kg)*	22,800 lbs* (9640 kg)*	31,700 lbs* (14 700 kg)*	24,400 lbs (11 320 kg)	23,000 lbs* (10 630 kg)*	15,600 lbs (7250 kg)	17,100 lbs (7940 kg)	11,000 lbs (5110 kg)	12,650 lbs (5900 kg)	8,100 lbs (3780 kg)	7,500 lbs* (4060 kg)*	6,150 lbs (2880 kg)	35.32 ft (10.77 m)	6,500 lbs* (2940 kg)*	6,050 lbs (2740 kg)
Groundline	8,050 lbs* (3610 kg)*	8,050 lbs* (3610 kg)*	19,000 lbs* (8360 kg)*	19,000 lbs* (8360 kg)*	35,250 lbs* (16 190 kg)*	22,800 lbs (10 590 kg)	23,650 lbs (11 010 kg)	14,750 lbs (6860 kg)	16,550 lbs (7690 kg)	10,500 lbs (4880 kg)	12,350 lbs (5750 kg)	7,850 lbs (3650 kg)	(3380 kg)*	(2820 kg)	34.55 ft (10.53 m)	7,100 lbs* (3210 kg)*	6,200 lbs (2800 kg)
-5 ft (-1.5 m)	16,000 lbs* (7180 kg)*	16,000 lbs* (7180 kg)*	23,150 lbs* (10 270 kg)*	23,150 lbs* (10 270 kg)*	35,800 lbs* (16 530 kg)*	22,100 lbs (10 280 kg)	23,050 lbs (10 730 kg)	14,250 lbs (6610 kg)	16,150 lbs (7520 kg)	10,150 lbs (4720 kg)	12,200 lbs (5670 kg)	7,650 lbs (3570 kg)			32.98 ft (10.06 m)	8,100 lbs* (3650 kg)*	6,600 lbs (3000 kg)
-10 ft (-3 m)	21,200 lbs* (9510 kg)*	21,200 lbs* (9510 kg)*	30,000 lbs* (13 280 kg)*	30,000 lbs* (13 280 kg)*	34,850 lbs* (16 090 kg)*	22,150 lbs (10 290 kg)	22,950 lbs (10 680 kg)	14,200 lbs (6580 kg)	16,150 lbs (7500 kg)	10,150 lbs (4710 kg)	12,200 lbs (5700 kg)	7,750 lbs (3600 kg)			30.55 ft (9.34 m)	9,700 lbs* (4380 kg)*	7,500 lbs (3380 kg)
-15 ft (-4.5 m)	28,250 lbs* (12 580 kg)*	28,250 lbs* (12 580 kg)*	41,200 lbs* (18 560 kg)*	41,200 lbs* (18 560 kg)*	31,550 lbs* (14 640 kg)*	22,500 lbs (10 460 kg)	22,950 lbs (10 680 kg)	14,450 lbs (6710 kg)	16,300 lbs (7570 kg)	10,500 lbs (4860 kg)					27.04 ft (8.2 m)	12,800 lbs* (5720 kg)*	9,150 lbs (4100 kg)
-20 ft (-6 m)			34,600 lbs* (16 290 kg)*	34,600 lbs* (16 290 kg)*	24,650 lbs* (11 620 kg)*	22,850 lbs (10 640 kg)	17,450 lbs* (8370 kg)*	14,850 lbs (6910 kg)							22 ft (6.82 m)	14,100 lbs* (6420 kg)*	12,750 lbs (5630 kg)

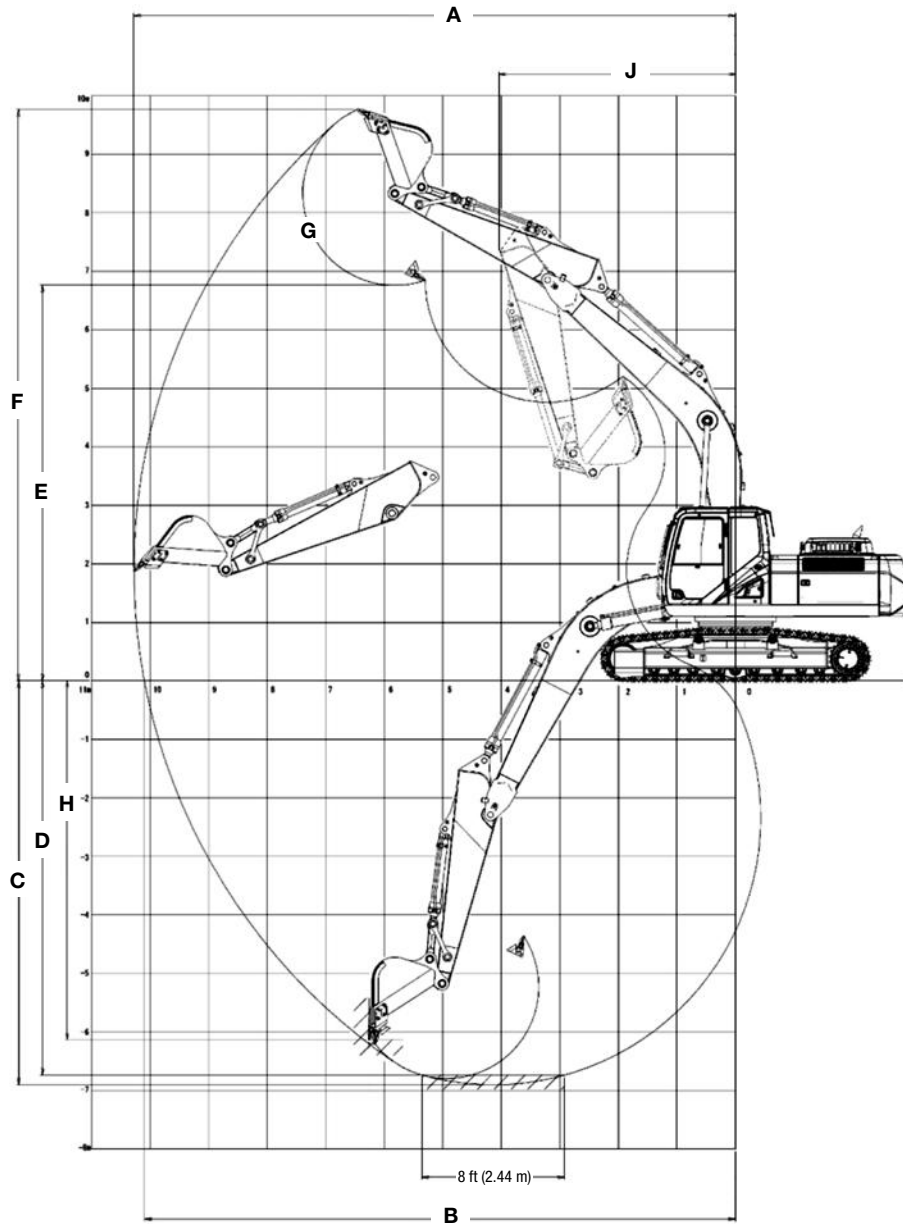


Line drawings are for illustrative purpose only and may not be exact representation of unit.

## DIMENSIONS

	10 ft 5 in (3.18 m) arm	8 ft 8 in (2.65 m) arm	12 ft 0 in (3.66 m) arm
<b>A.</b> Overall height (w/ attachment)	10 ft 8 in (3.26 m)	10 ft 11 in (3.34 m)	11 ft 4 in (3.46 m)
<b>B.</b> Cab height	10 ft 1 in (3.08 m)	10 ft 1 in (3.08 m)	10 ft 1 in (3.08 m)
<b>C.</b> Overall length (w/ attachment)	34 ft 4 in (10.45 m)	34 ft 5 in (10.48 m)	34 ft 4 in (10.47 m)
<b>D.</b> Overall length (w/o attachment)	18 ft 4 in (5.58 m)	18 ft 4 in (5.58 m)	18 ft 4 in (5.58 m)
<b>E.</b> Width of upperstructure	9 ft 6 in (2.89 m)	9 ft 6 in (2.89 m)	9 ft 6 in (2.89 m)
Width of upperstructure with catwalks	NA	NA	NA
<b>F.</b> Track overall length	15 ft 11 in (4.85 m)	15 ft 11 in (4.85 m)	15 ft 11 in (4.85 m)
<b>G.</b> Track overall width w/ 31.5 in (800 mm) shoes	11 ft 2 in (3.40 m)	11 ft 2 in (3.40 m)	11 ft 2 in (3.40 m)
<b>H.</b> Track shoe width	31.5 in (800 mm)	31.5 in (800 mm)	31.5 in (800 mm)
<b>J.</b> Center to center (idler to sprocket)	13 ft 1 in (3.98 m)	13 ft 1 in (3.98 m)	13 ft 1 in (3.98 m)
<b>K.</b> Upperstructure ground clearance	3 ft 10 in (1.18 m)	3 ft 10 in (1.18 m)	3 ft 10 in (1.18 m)
<b>L.</b> Minimum ground clearance	19 in (0.48 m)	19 in (0.48 m)	19 in (0.48 m)
<b>M.</b> Rear tail swing radius	10 ft 4 in (3.16 m)	10 ft 4 in (3.16 m)	10 ft 4 in (3.16 m)
Operating weight *	65,900 lb (29 900 kg)	65,900 lb (29 900 kg)	65,900 lb (29 900 kg)
Ground pressure	6.29 psi (0.43 bar)	6.29 psi (0.43 bar)	6.29 psi (0.43 bar)

\* Machine equipped with 20 ft. 2 in. (6.15) boom



**PERFORMANCE SPECS**

	10 ft 5 in (3.18 m) arm	8 ft 8 in (2.65 m) arm	12 ft 0 in (3.66 m) arm
<b>A.</b> Maximum dig radius	35 ft 0 in (10.67 m)	33 ft 6 in (10.22 m)	36 ft 7 in (11.16 m)
<b>B.</b> Maximum dig radius at groundline	36 ft 0 in (10.98 m)	34 ft 4 in (10.47 m)	38 ft 5 in (11.72 m)
<b>C.</b> Maximum dig depth	23 ft 4 in (7.1 m)	21 ft 6 in (6.57 m)	24 ft 10 in (7.58 m)
<b>D.</b> Dig depth - 8 ft (2.44 m) level bottom	22 ft 9 in (6.94 m)	21 ft 0 in (6.39 m)	24 ft 5 in (7.44 m)
<b>E.</b> Dump height	23 ft 3 in (7.09 m)	22 ft 9 in (6.94 m)	24 ft 3 in (7.39 m)
<b>F.</b> Maximum reach height	33 ft 7 in (10.60 m)	32 ft 5 in (9.93 m)	34 ft 1 in (10.39 m)
<b>G.</b> Bucket rotation	173°	173°	173°
<b>H.</b> Maximum vertical wall dig depth	20 ft 0 in (6.12 m)	18 ft 10 in (5.70 m)	22 ft 1 in (6.72 m)
<b>J.</b> Minimum swing radius	12 ft 11 in (3.92 m)	13 ft 1 in (4.0 m)	13 ft 1 in (4.0 m)
Arm digging force:			
Standard	27,340 lbf (121.6 kN)	31,520 lbf (140.2 kN)	24,680 lbf (109.8 kN)
Power Boost	29,760 lbf (132.4 kN)	34,400 lbf (153.0 kN)	26,680 lbf (118.7 kN)
Bucket digging force:			
Standard	39,250 lbf (174.6 kN)	39,250 lbf (174.6 kN)	39,250 lbf (174.6 kN)
Power Boost	42,760 lbf (190.2 kN)	42,760 lbf (190.2 kN)	42,760 lbf (190.2 kN)

## STANDARD EQUIPMENT

### ENGINE

Isuzu six-cylinder turbo-charged diesel  
Tier 4 Interim Certified (CEGR)  
Electronic fuel injection  
High pressure common rail system  
Diesel Particulate Defuser System (DPD)  
Neutral safety start  
Auto-engine warm up  
Glow-plug pre-heat  
FEA (Fuel Economy System)  
EPF (Engine Protection Feature)  
Dual-stage fuel filtration  
Dual element air filter  
Remote oil filter  
Green plug oil drain  
500-hour engine oil change interval  
24-volt system  
Requires CJ-4 engine oil  
Requires Ultra-low sulfur fuel

### FUEL ECONOMY SYSTEMS

Engine Idle / Fuel Economy System:  
Auto-idle  
One-touch idle  
Idle shut-down  
BEC - boom economy control  
AEC - auto economy control  
SWC - swing relief control  
SSC - spool stroke control

### HYDRAULICS

Auto power boost  
Auto swing priority  
Auto travel speed change  
Selectable work modes  
ISO pattern controls

## OPTIONAL EQUIPMENT

### HYDRAULICS

Auxiliary Hydraulics –  
Single acting / joystick activated  
Double acting / joystick activated  
Multi-function w/pressure control /  
joystick activated (five programmable  
pre-sets on monitor)  
Secondary low-flow / joystick activated

### ATTACHMENT

Arm - 8 ft 8 in (2.65 m)  
Arm - 12 ft 0 in (3.66 m)  
Coupler / Case multi-pin grabber  
Buckets: Heavy duty / Extreme duty  
Load holding control  
Free swing (order kit through Service Parts)  
Hose Burst Check Valve (HBCV)

## BUCKETS

Application	Width	SAE Heaped Capacity
General purpose	30 in to 60 in (0.76 to 1.52 m)	1.26 yd <sup>3</sup> to 2.93 yd <sup>3</sup> (0.96 m <sup>3</sup> to 2.24 m <sup>3</sup> )
Heavy-duty	30 in to 54 in (0.76 to 1.37 m)	1.22 yd <sup>3</sup> to 2.53 yd <sup>3</sup> (0.93 m <sup>3</sup> to 1.93 m <sup>3</sup> )
Extreme-duty	30 in to 48 in (0.76 to 1.22 m)	1.12 yd <sup>3</sup> to 2.04 yd <sup>3</sup> (0.86 m <sup>3</sup> to 1.56 m <sup>3</sup> )
Ditching	72 in (1.83 m)	2.20 yd <sup>3</sup> (1.68 m <sup>3</sup> )

### HYDRAULICS (continued)

Pre-set auxiliary pump settings  
Auxiliary valve  
Auxiliary pipe brackets  
5,000 hour hydraulic oil change interval  
1,000 hour hydraulic filter change interval  
Hydraulic track adjustment  
SAHR brake

### UPPERSTRUCTURE

Right and left side mirrors  
Isolation mounted cab (fluid and spring)  
Common key vandal locks  
Upper mounted work light (70 watt)  
Swivel guard belly pan

### ATTACHMENT

Boom – 20 ft 2 in (6.15 m)  
Arm – 10 ft 5 in (3.18 m)  
Heavy-duty bucket linkage  
Boom mounted work light (70 watt)  
Auxiliary pipe brackets  
Centralized grease fittings  
Attachment cushion valve  
Arm and boom regeneration

### OPERATOR STATION

ROPS protection  
FOPS cab top guard (Level 1)  
Pressurized cab  
One-touch lock front window  
AC/heat/defrost w/ auto climate control  
Color monitor – 7 in (180 mm)  
Interior dome light

### OPERATOR STATION

Control pattern selector  
FOPS cab top guard (Level 2)  
Front grill guard - 2 x 2 in (50.8 x 50.8 mm)  
screen mesh  
Front rock guard - vertical bars  
(two piece) / OPG 1  
Front rock guard - vertical bars  
(one piece) / OPG 2  
Vandal guard  
Rain deflector  
Sun visor  
Side-view camera

### OPERATOR STATION (continued)

Air-suspension seat (cloth)  
Seat-belt  
Adjustable armrests  
Tilting consoles - 4-position  
Low-effort joystick controls  
Sliding cockpit – 7 in (180 mm)  
Controls pre-wired for auxiliary  
Single pedal travel  
Straight travel  
AM/FM radio w/ antenna and 2 speakers  
Aux-in port for personal electronics  
Rear-view camera  
Anti-theft system (start code system)  
Rubber floor mat  
12-volt electric socket  
24-volt cigarette lighter  
External rear view mirrors  
Windshield wiper / washer  
Clear (polycarbonate) roof window w/ sunshade  
Cup holder  
Storage compartments  
Warm / cool storage compartment  
On-board diagnostic system  
Travel alarm with cancel switch  
One key start & lock-up

### UNDERCARRIAGE

31.5 in (800 mm) steel shoes, triple semi-grouser  
Full overlap turntable bearing tub  
Single track chain guides  
Hydraulic track adjustment  
X-pattern carbody

### UPPERSTRUCTURE

Refueling pump  
Rubber bumper guard  
(order through Service Parts)

### UNDERCARRIAGE

23.6 in (600 mm) steel shoes, triple semi-grouser  
27.6 in (700 mm) steel shoes, triple semi-grouser  
Track guides - triple

**This page intentionally left blank.**



NOTE: All specifications are stated in accordance with SAE Standards or Recommended Practices, where applicable.

NOTE: All engines meet current EPA emissions requirements.

IMPORTANT: Case Construction Equipment Inc. reserves the right to change these specifications without notice and without incurring any obligation relating to such change. Case Construction Equipment Inc. does not warrant the safety or reliability of attachments from other manufacturers.

Case is a registered trademark of CNH America LLC. Any trademarks referred to herein, in association with goods and/or services of companies other than CNH America LLC, are the property of those respective companies.



[www.casece.com](http://www.casece.com)



**CASE**  
CONSTRUCTION

**C SERIES**  
EXCAVATORS

CX75C SR | CX90C | CX130C | CX145C SR | CX160C | CX210C  
CX235C SR | CX250C | **CX300C** | CX350C | CX470C | CX700\* | CX800\*

\*B SERIES EXCAVATORS




## MORE DIRT MOVED. LESS FUEL USED.

With a full line of conventional swing machines ranging from 8 to 80 tons and short-radius models up to 23 tons, CASE excavators combine the muscle and finesse that's required to get the job done as effectively and efficiently as possible in nearly any application or working environment. That means digging, dumping, swinging, lifting and loading faster, but without burning excess fuel or sacrificing precision and comfort. Less jolting and jerking. Fewer fill-ups. More jobs done. That's how CASE does it.



 Up to 10%  
Fuel Efficiency

 Unmatched  
Featherability

 Simple  
Serviceability

 Best-in-Class  
Cab Comfort

 Protected by  
ProCare™





**Conventional Excavators Available**



**Short-Radius Excavators Available**



**CASE Intelligent Hydraulic System (CIHS)**

# HARNESS THE POWER.



## **DOLLAR-STRETCHING FUEL EFFICIENCY**

An efficient engine with cooled exhaust gas recirculation (CEGR) Tier 4 technology combines with intelligent hydraulics that manage RPMs and software that automatically monitors and reacts to engine load. The result is a cleaner burning engine that achieves up to 10% in better fuel efficiency and a cycle time increase of up to 5% over our award-winning B Series, providing more power and speed with less fuel.

\*CX75C SR and CX80C offer Tier 4 Final solutions



## **CASE INTELLIGENT HYDRAULIC SYSTEM (CIHS)**

By blending four integrated hydraulic control systems throughout lift/dump and dig/curl movements, CASE excavators can move more dirt per gallon and load more trucks per shift.

- Boom Economy Control (BEC) reduces RPMs during boom down and swing
- Auto Economy Control (AEC) lowers RPMs during idle
- Swing Relief Control (SWC) manages hydraulic power at the swing start
- Spool Stroke Control (SSC) adjusts hydraulic pressure during digs



## **PHENOMENAL FEATHERABILITY**

The fine-tuned engine and hydraulic control matching of CASE excavators delivers remarkable responsiveness of the loader arm and bucket. Digging is smoother and craning is more controlled for faster, more precise placement when positioning pipes, basins or any material.

## **INCREASED LIFTING CAPACITY**

Thanks to the front attachment optimization, lifting capacity has increased by 6%.

## **THREE POWER MODES**

C Series excavators are designed with three selectable working modes to give operators the ideal mix of machine power and fuel efficiency for each application – Speed Priority (SP), Heavy-Duty (H) and Automatic (A).



“We switched excavator brands, bought a CASE,  
and cut our fuel consumption by nearly two-thirds.”

— **Dave Goodermote**, Goodermote Excavating





Superior cab features  
made for operator  
comfort, control and  
efficiency.

**Model CX145C SR**

# LOVE WHERE YOU WORK.

## BEST-IN-CLASS OPERATOR ENVIRONMENT

Climb inside a ROPS/FOPS-certified cab with spacious comfort. Features like a standard intelligent climate control system that automatically responds to sunlight, a five-position deluxe air-ride seat, cushioned armrests and an optional Bluetooth radio help keep you comfortable. All in a cab with up to 7% more space than the B Series, up to 25% more airflow and as much as 8% more cooling to give operators of any size more comfort and room to work.

## 360° VISIBILITY

With a standard rear camera and optional side camera, ISO-compliant mirrors and a roof skylight, C Series excavators deliver greatly improved visibility over previous generations so operators can see more and worry less.



Air suspension seat comes standard.

## INDUSTRY-LEADING DISPLAY

Standard on all C Series excavators, a 7-inch full-color, anti-glare HD monitor gives operators access to onboard diagnostics, real-time fuel consumption and an Electronic Pressure Control (EPC) option\*. The EPC is a 10-memory recall control that lets you program and store pressure settings for up to 10 hydraulic attachments – no need to look up settings every time. The widescreen monitor also offers side-by-side views when equipped with multiple cameras.

\*Optional on CX210C through CX350C

## LOW NOISE, LESS VIBRATION

Isomount® cushioning gives the C Series one of the quietest cabs in the industry – inside and out – with interior decibels as low as 70 dBA. And with a dramatic reduction in vibration and bouncing, this enhanced system will give your back a break too.

## MORE CONTROL

A new joystick with proportional controls is now available, with attachments memory.



7-inch anti-glare, HD monitor offers a wealth of intuitive controls.

# SHORT-RADIUS EXCAVATORS.

CX75C SR | CX145C SR | CX235C SR



## BIG-TIME PRECISION SQUEEZED IN

Few excavators can handle confined spaces as deftly as the CX75C SR, CX145C SR and CX235C. A high-and-tight counterweight minimizes backend overhang, and the boom is mounted further back to allow for a tighter swing radius. This condenses the overall work envelope to better work in confined space while still maintaining the strength and performance of traditional excavators.

# MID-SIZED MODELS.

CX75C SR | CX80C



## SMALLER SIZE. SAME STRENGTHS.

In addition to the great features of our full-sized excavators, including intelligent hydraulics, convenient controls and impressive fuel efficiency, the CX75C SR and CX80C mid-sized excavators are designed for heavy-duty tasks in restricted conditions. A short-tail counterweight and the CX80C's front-swing radius reduce the machine's work envelope to under nine-feet wide\* for less disruption in confined spaces.

\*On CX75C SR



## FIRST-IN-CLASS TIER 4 FINAL ENGINE

CASE midis meet Tier 4 Final regulations without the need for a Diesel Particulate Filter (DPF) nor the use of Diesel Exhaust Fluid (DEF) thanks to a unique DOC-only CEGR (Cooled Exhaust Gas Recirculation) system. This highly efficient setup eliminates the need for active regeneration and never needs to be replaced. Simply operate as usual.



## SURPRISINGLY BIG COMFORT

The CX75C SR and CX80C cabs have been upgraded to the same size as the CX145C SR and CX235C SR models to give operators plenty of room to work.



## OFFSET BOOM OPTION

Perfect for digging alongside walls, working around obstacles and trenching for pipe or utility work, the offset boom option gives the CX75C SR impressive flexibility. With a pivot between the arm and boom, the machine is able to increase its work area without repositioning and provides excellent attachment visibility when side digging.



# MAINTENANCE MADE EASY.

## SERVICEABILITY IS IN OUR DNA

When you invest in CASE equipment, you need it to last. We make it simple. CASE excavators are no exception. From ground-level site gauges to grouped service points, you can do daily maintenance in a matter of minutes. It's the easiest way to help you get the most performance and longest life out of your machine.



### EASY ACCESS TO EVERYTHING

1. Engine air filter
2. Grouped lubrication points
3. Green plug oil drain
4. Service points
5. Remote oil filter
6. Lubricated EMS bushings
7. Fuse box
8. Cabin air filter

### IMPRESSIVE SERVICE INTERVALS

- Engine oil — 500 hours / best in class
- Boom & arm linkage pin grease — 1,000 hours
- Hydraulic oil — 5,000 hours





### CASE EASY MAINTENANCE SYSTEM (EMS)

CASE uses stratified bushings and plated pins on most pivot points, which holds grease longer, increases lubrication intervals and prevents rattling.



Model CX350C

### NO TOOLS NEEDED

CASE excavators continue our hallmark of simple serviceability with features like tool-free access to routine maintenance points.





# ATTACHED TO STRENGTH.

## ARMS FOR ANY APPLICATION

From short arms for faster production cycles to long arms and long reach models that maximize the work envelope, CASE excavators offer several arm lengths and setups to fit varying needs.



## CONVENIENT QUICK-COUPLER

An optional hydraulic quick-coupler allows operators to fasten and lock attachments from the safety and comfort of the cab.



## FULL LINE OF CASE ATTACHMENTS

CASE offers bucket options to fit any application:

- General Purpose (STDP)
- Heavy-Duty (HDP)
- Severe Duty (XPD)
- Ditching (DTCH)
- Frost Tooth
- High Capacity
- Rock
- Thumb
- Hydraulic Breaker



## SMARTFIT™ BUCKET TEETH

CASE excavator buckets come standard with the innovative SmartFit bucket tooth system. These heavy-duty, self-sharpening teeth combine exceptional strength and unmatched ease of installation thanks to a hammerless fastener system with reusable locking pins. Available in a full range of styles.



## EVEN MORE OPTIONS

Additional attachments and hydraulic packages, including single, dual-pump or bi-directional flow options, are available. A full-width backfill blade is also available on select models and the 210C can be outfitted with a narrow undercarriage configuration. Talk to your CASE dealer for a complete list of excavator attachments and options.



# ProCare

## GO BIG. WE'VE GOT YOU COVERED.

CASE ProCare is the first all-in-one heavy machine support program that's as powerful as the equipment it protects. Best of all, ProCare comes standard on C Series excavators† and keeps you covered for up to three full years. It's the assurance growing businesses need to stay competitive, productive and profitable.

†ProCare not available on CX75C SR and CX80C.

### Breakdown Assistance

Standard on all CASE equipment.



**3-year/3000-hr. Full-Machine Factory Limited Warranty\***

We've got your back — for up to three full years!

**3-year/3000-hr. Planned Maintenance**

Don't spend a dime for CASE-certified scheduled care — fluids, filters and labor included.

**3-year Advanced SiteWatch™ Subscription**

Telematics isn't a luxury, it's a necessity — and we've made it accessible to all.



## STRONGER PRODUCT SUPPORT SOLUTIONS

Your CASE dealer knows best how you can maximize your equipment investment and uptime, with genuine CASE parts, expert service and a complete range of product support solutions – including CASE remanufactured and all-makes parts. CASE supports better parts availability and faster deliveries, through nine parts distribution centers in North America and a forecasting system to ensure that the right parts will be there when you need them. And only CASE dealers have exclusive access to the Electronic Service Tool that quickly pinpoints machine issues to help maximize uptime.

\*See CNH Warranty and Limitation of Liability for complete terms and limits of warranty. ProCare is a factory-fit program available only on select 2013 and later machines.

PLAN FEATURES		BASIC	ADVANCED
 <b>Fleet Management</b>	Locating and pinging machines for project management	✓	✓
	Machine hour reporting	✓	✓
 <b>Planned Maintenance</b>	Plan and prepare for maintenance intervals (ordering parts, scheduling)	✓	✓
 <b>Security</b>	Geofencing: Real-time notification of unplanned movements	✓	✓
	Curfew	✓	✓
 <b>Utilization Analysis &amp; Reporting</b>	Reporting: Machine run times, idle time vs. operation, travel time, machine utilization by location	✓	✓
 <b>Performance Analysis</b>	Engine load data to compare machines and operators to identify operation trends		✓
 <b>Fuel Info &amp; Reporting</b>	Fuel rate and consumption data to track fuel use for one machine or a fleet		✓
 <b>Machine Health Parameters</b>	Track machine operating characteristics: Temperatures, pressures, alerts for out-of-range parameters and CAN-bus parameters for diagnostics and troubleshooting		✓

### REMOTE. CONTROL.

Included with ProCare on the CX130C and larger excavators, CASE SiteWatch™ telematics breaks the boundaries of fleet management by allowing you to monitor and manage multiple machines from your office, wherever that may be. No more manually tracking down engine hours and fuel levels. Get real-time performance metrics, idle-time analytics, scheduled maintenance intervals and programmable security alerts sent to any computer, anytime, anywhere.





GAC

EX130C

# THE C SERIES EXCAVATORS



## C SERIES EXCAVATORS

SPECIFICATIONS	CX80C	CX130C STD LC	CX160C STD LC	CX210C STD LC	CX250C STD LC	CX300C STD LC	CX350C STD LC	CX470C STD LC
<b>Engine</b>	Isuzu AP-4LE2X	Isuzu AP-4JJ1X	Isuzu AP-4JJ1X	Isuzu AM-4HK1X	Isuzu AL-4HK1X	Isuzu AL-6HK1X	Isuzu AL-6HK1X	Isuzu AL-6UZ1X
<b>Net hp (kW)</b>	54 (40) @ 2000 RPM	100 (74.9) @ 2000 RPM	124 (92.2) @ 2200 RPM	160 (119.3) @ 1800 RPM	177 (132.1) @ 2000 RPM	207 (154) @ 1800 RPM	266 (198) @ 1900 RPM	362 (270) @ 2000 RPM
<b>Emissions certification*</b>	Tier 4 Final (DOC-Only)	Tier 4 Interim (CEGR/DPF)	Tier 4 Interim (CEGR/DPF)	Tier 4 Interim (CEGR/DPF)	Tier 4 Interim (CEGR/DPF)	Tier 4 Interim (CEGR/DPF)	Tier 4 Interim (CEGR/DPF)	Tier 4 Interim (CEGR/DPF)
<b>Bucket digging force – lb. (kN)</b>	12,792 (56.9)	21,357 (95.0)	26,527 (118.0)	34,171 (152.0)	39,117 (174.0)	42,759 (190.2)	55,843 (248.4)	60,698 (270.0)
<b>Arm digging force – lb. (kN)</b>	8,880 (39.5)	14,837 (66.0)	18,884 (84.0)	24,729 (110.0)	29,000 (129.0)	29,765 (132.4)	34,396 (153.0)	46,311 (206.0)
<b>Operating weight – lb. (kg)</b>	18,276 (8 290)	27,040 (12 265)	36,933 (16 753)	46,350 (21 024)	53,545 (24 288)	63,960 (29 012)	77,421 (35 118)	105,403 (47 810)
<b>Drawbar pull – lb. (kN)</b>	13,376 (59.5)	36,194 (161.0)	36,194 (161.0)	42,264 (188.0)	45,187 (201.0)	52,380 (233.0)	59,125 (263.0)	76,435 (340.0)
<b>DIMENSIONS</b>								
<b>Overall height with attachment</b>	9 ft. 1 in. (2.76 m)	9 ft. 3 in. (2.83 m)	9 ft. 9 in. (2.98 m)	9 ft. 10 in. (3.00 m)	10 ft. 6 in. (3.20 m)	10 ft. 8 in. (3.26 m)	11 ft. 3 in. (3.42 m)	11 ft. 11 in. (3.62 m)
<b>Cab height</b>	9 ft. 1 in. (2.76 m)	9 ft. 3 in. (2.83 m)	9 ft. 9 in. (2.98 m)	9 ft. 6 in. (2.90 m)	9 ft. 10 in. (3.00 m)	10 ft. 3 in. (3.12 m)	10 ft. 2 in. (3.11 m)	11 ft. 3 in. (3.44 m)
<b>Overall length with attachment</b>	22 ft. 1 in. (6.73 m)	25 ft. 0 in. (7.62 m)	27 ft. 8 in. (8.44 m)	30 ft. 9 in. (9.38 m)	32 ft. 8 in. (9.95 m)	34 ft. 3 in. (10.45 m)	36 ft. 5 in. (11.10 m)	39 ft. 9 in. (12.11 m)
<b>Overall length without attachment</b>	11 ft. 2 in. (3.41 m)	13 ft. 5 in. (4.10 m)	14 ft. 6 in. (4.41 m)	16 ft. 3 in. (4.96 m)	17 ft. 3 in. (5.27 m)	18 ft. 4 in. (5.58 m)	19 ft. 9 in. (6.01 m)	21 ft. 2 in. (6.45 m)
<b>Width of upperstructure</b>	7 ft. 5 in. (2.27 m)	8 ft. 4 in. (2.54 m)	8 ft. 4 in. (2.54 m)	9 ft. 1 in. (2.77 m)	9 ft. 1 in. (2.77 m)	9 ft. 6 in. (2.89 m)	9 ft. 11 in. (3.02 m)	10 ft. 0 in. (3.06 m)
<b>Track overall length</b>	9 ft. 4 in. (2.85 m)	12 ft. 4 in. (3.76 m)	13 ft. 1 in. (3.99 m)	14 ft. 8 in. (4.47 m)	15 ft. 3 in. (4.65 m)	15 ft. 11 in. (4.85 m)	16 ft. 4 in. (4.98 m)	17 ft. 11 in. (5.45 m)
<b>Track overall width</b>	7 ft. 7 in. (2.32 m)	8 ft. 6 in. (2.59 m)	8 ft. 6 in. (2.59 m)	10 ft. 6 in. (3.19 m)	11 ft. 1 in. (3.39 m)	11 ft. 2 in. (3.40 m)	11 ft. 2 in. (3.40 m)	12 ft. 0 in. (3.65 m)
<b>Track shoe width</b>	17.7 in. (450 mm)	23.6 in. (600 mm)	23.6 in. (600 mm)	31.5 in. (800 mm)	31.5 in. (800 mm)	31.5 in. (800 mm)	31.5 in. (800 mm)	35.4 in. (900 mm)
<b>Upperstructure ground clearance</b>	2 ft. 6 in. (0.75 m)	2 ft. 11 in. (0.90 m)	3 ft. 4 in. (1.02 m)	3 ft. 5 in. (1.04 m)	3 ft. 7 in. (1.10 m)	3 ft. 10 in. (1.18 m)	4 ft. 0 in. (1.21 m)	4 ft. 4 in. (1.33 m)
<b>Minimum ground clearance</b>	14.2 in. (0.36 m)	17.3 in. (0.44 m)	17.3 in. (0.44 m)	17.3 in. (0.44 m)	18.1 in. (0.46 m)	18.9 in. (0.48 m)	18.9 in. (0.48 m)	21.3 in. (0.54 m)
<b>Rear tail swing radius</b>	5 ft. 6 in. (1.68 m)	7 ft. 0 in. (2.13 m)	9 ft. 10 in. (2.99 m)	9 ft. 0 in. (2.75 m)	9 ft. 8 in. (2.95 m)	10 ft. 4 in. (3.16 m)	11 ft. 8 in. (3.55 m)	12 ft. 3 in. (3.73 m)
<b>Maximum digging depth</b>	13 ft. 9 in. (4 180 mm)	18 ft. 2 in. (5 540 mm)	19 ft. 11 in. (6 010 mm)	21 ft. 10 in. (6 650 mm)	22 ft. 8 in. (6 900 mm)	23 ft. 4 in. (7 100 mm)	26 ft. 8 in. (8 140 mm)	25 ft. 4 in. (7 720 mm)

NOTE: Measurements taken using standard equipment.

\*CEGR = Cooled Exhaust Gas Recirculation; DOC = Diesel Oxidation Catalyst; DPF = Diesel Particulate Filter.

# THE B & C SERIES EXCAVATORS



## C SERIES SHORT-RADIUS EXCAVATORS

SPECIFICATIONS	CX75C SR	CX145C SR LC	CX235C SR LC
Engine	Isuzu AP-4LE2X	Isuzu AP-4JJ1X	Isuzu AM-4HK1X
Net hp (kW)	54 (40) @ 2000 RPM	100 (74.9) @ 2000 RPM	160 (119.3) @ 1800 RPM
Emissions certification*	Tier 4 Final (DOC-Only)	Tier 4 Interim (CEGR/DPF)	Tier 4 Interim (CEGR/DPF)
Bucket digging force – lb. (kN)	12,792 (56.9)	21,357 (95.0)	34,171 (152.0)
Arm digging force – lb. (kN)	8,880 (39.5)	14,837 (66.0)	24,729 (110.0)
Operating weight – lb. (kg)	15,917 (7 220)	30,424 (13 800)	54,562 (24 749)
Drawbar pull – lb. (kN)	13,376 (59.5)	26,078 (116.0)	45,187 (201.0)

### DIMENSIONS

Overall height with attachment	9 ft. 5 in. (2.86 m)	9 ft. 2 in. (2.80 m)	10 ft. 2 in. (3.09 m)
Cab height	9 ft. 1 in. (2.76 m)	9 ft. 2 in. (2.80 m)	10 ft. 0 in. (3.04 m)
Overall length with attachment	18 ft. 11 in. (5.76 m)	24 ft. 1 in. (7.35 m)	29 ft. 0 in. (8.83 m)
Overall length without attachment	9 ft. 4 in. (2.85 m)	12 ft. 4 in. (3.76 m)	14 ft. 8 in. (4.47 m)
Width of upperstructure	7 ft. 5 in. (2.27 m)	8 ft. 2 in. (2.49 m)	9 ft. 10 in. (2.99 m)
Track overall length	9 ft. 4 in. (2.85 m)	12 ft. 4 in. (3.76 m)	14 ft. 8 in. (4.47 m)
Track overall width	7 ft. 7 in. (2.32 m)	8 ft. 6 in. (2.59 m)	10 ft. 6 in. (3.19 m)
Track shoe width	17.7 in. (450 mm)	23.6 in. (600 mm)	31.5 in. (800 mm)
Upperstructure ground clearance	2 ft. 6 in. (0.75 m)	2 ft. 11 in. (0.88 m)	3 ft. 4 in. (1.02 m)
Minimum ground clearance	14.2 in. (0.36 m)	17.3 in. (0.44 m)	17.3 in. (0.44 m)
Rear tail swing radius	4 ft. 3 in. (1.29 m)	5 ft. 1 in. (1.55 m)	5 ft. 8 in. (1.72 m)
Maximum digging depth	13 ft. 7 in. (4 130 mm)	19 ft. 9 in. (6 010 mm)	21 ft. 10 in. (6 650 mm)

## B SERIES EXCAVATORS

SPECIFICATIONS	CX700B HD	CX800B HD
Engine	AH- 6WG1XYSS	AH- 6WG1XYSS
Net hp (kW)	463 (345) @ 1800 RPM	532 (397) @ 1800 RPM
Emissions certification*	Tier III	Tier III
Bucket digging force – lb. (kN)	71,260 (317.0)	81,156 (361.0)
Arm digging force – lb. (kN)	55,078 (245.0)	67,443 (300.0)
Operating weight – lb. (kg)	153,400 (69 518)	178,575 (81 000)
Drawbar pull – lb. (kN)	103,862 (462.0)	127,017 (565.0)

### DIMENSIONS

Overall height with attachment	14 ft. 1 in. (4.30 m)	15 ft. 9 in. (4.81 m)
Cab height	11 ft. 5 in. (3.48 m)	11 ft. 10 in. (3.61 m)
Overall length with attachment	43 ft. 7 in. (13.30 m)	47 ft. 1 in. (14.36 m)
Overall length without attachment	22 ft. 8 in. (6.91 m)	24 ft. 6 in. (7.46 m)
Width of upperstructure	13 ft. 1 in. (3.99 m)**	13 ft. 11 in. (4.25 m)
Track overall length	19 ft. 3 in. (5.88 m)	20 ft. 10 in. (6.36 m)
Track overall width	13 ft. 7 in. (4.15 m)	14 ft. 4 in. (4.36 m)
Track shoe width	35.5 in. (900 mm)	29.5 in. (750 mm)
Upperstructure ground clearance	4 ft. 11 in. (1.51 m)	5 ft. 3 in. (1.59 m)
Minimum ground clearance	32 in. (0.83 m)	35 in. (0.89 m)
Rear tail swing radius	13 ft. 2 in. (4.00 m)	14 ft. 1 in. (4.30 m)
Maximum digging depth	32 ft. 4 in. (9 850 mm)	35 ft. 0 in. (10 660 mm)

NOTE: Measurements taken using standard equipment.

\*CEGR = Cooled Exhaust Gas Recirculation; DOC = Diesel Oxidation Catalyst; DPF = Diesel Particulate Filter.

\*\*Width includes catwalks.





## BUILDING A STRONG CASE

Already in high gear with the arrival of founder J.I. Case's portable steam engine in 1869, we found ourselves at the heart of the road construction boom of the early 1900s. The path was set. Today, CASE is a game changer in construction equipment, financing, parts and service.

Revolutionary is nothing new to CASE, as innovations like the integrated loader/backhoe (1957), Ride Control™, over-center boom design and ProCare have shown. It's this ingenuity and spirit that fuels our ongoing pursuit of building industry-leading performance and productivity into every machine throughout our full line of light, medium and heavy equipment.

All of this is backed by a portfolio of more than 10,000 OEM, REMAN and Gold Value parts, more than 350 North American dealer locations, and unmatched financial and insurance services that ensure the best support is always within reach. When all is said and done, our strength is only as solid as the machines we engineer, the support and service we give, and most importantly, the vote of confidence CASE customers have with every bit of it.



Specialized finance programs and flexible leasing packages put you in the driver's seat of industry-leading CASE equipment, while no-nonsense warranties and comprehensive protection plans ensure that your equipment is protected. As the only finance company dedicated to CASE, we offer strong products and services designed around your unique needs and are the only ones supported by the helpful service professionals at your CASE dealer.

To learn more about CASE or for attentive customer service, visit your nearest dealer, call 1-866-54CASE6 or visit us online at [CaseCE.com](http://CaseCE.com).





CaseCE.com



©2014 CNH Industrial America LLC. All rights reserved. CASE is a trademark registered in the United States and many other countries, owned by or licensed to CNH Industrial N.V., its subsidiaries or affiliates. CNH Industrial Capital is a trademark in the United States and many other countries, owned by or licensed to CNH Industrial N.V., its subsidiaries or affiliates. Printed in U.S.A.

Form No. CCE201401EXC



**SAFETY™  
NEVER HURTS**

Always read the Operator's Manual before operating any equipment. Inspect equipment before using it, and be sure it is operating properly. Follow the product safety signs and use any safety features provided.

NOTE: All engines meet current EPA emission regulations.

NOTE: All specifications are stated in accordance with SAE Standards or Recommended Practices, where applicable.



Contains 10%  
post-consumer fiber

IMPORTANT: CASE Construction Equipment Inc. reserves the right to change these specifications without notice and without incurring any obligation relating to such change. Availability of some models and equipment builds vary according to the country in which the equipment is used. The illustrations and text may include optional equipment and accessories and may not include all standard equipment. Your CASE dealer/distributor will be able to give you details of the products and their specifications available in your area.



CASE Construction Equipment  
is biodiesel friendly.