

# Crawler Tractors

**PR 754**  
Litronic®

**PR 764**  
Litronic®

Engine Output: 250 kW / 340 HP  
Operating Weight: 35,000 – 40,800 kg  
77,162 – 89,948 lb

310 kW / 422 HP  
44,220 – 52,685 kg  
97,488 – 116,150 lb



# LIEBHERR

# Basic machine



## Engine

	PR 754	PR 764
Liebherr diesel engine	D 946 L A6 Emission regulations according to 97/68/EC, 2004/26/EC Stage IIIA and EPA/CARB Tier 3	D 9508 A7
Rating (ISO 9249)	250 kW / 340 HP	310 kW / 422 HP
Rating (SAE J1349)	250 kW / 335 HP	310 kW / 416 HP
Rated speed	1,600 1/min	1,600 1/min
Displacement	12 l / 733 in <sup>3</sup>	16.2 l / 989 in <sup>3</sup>
Design	6 cylinder in-line-engine	8 cylinder V-engine (wet-sleeve) water-cooled, turbocharged, intercooled
Injection system	Direct fuel injection, pump-line-nozzle system, electronic control	Direct fuel injection, Common Rail system, electronic control
Lubrication	Force-feed lubrication, engine lubrication guaranteed for inclinations up to 45° (PR 754) and 40° (PR 764)	
Operating voltage	24 V	24 V
Alternator	80 A	80 A
Starter	7.8 kW / 11 HP	7.8 kW / 11 HP
Batteries	2 x 225 Ah / 12 V	2 x 225 Ah / 12 V
Air cleaner	Dry-type air cleaner with safety element, aspirated pre-cleaner, service gauge in cab	
Cooling system	Combi radiator, comprising a radiator for water and charge air. Hydrostatic fan drive	



## Travel drive, control

	PR 754	PR 764
Transmission system	Infinitely variable hydrostatic travel drive, independent drive for each track	
Travel speed*	continuously variable	
Speed range 1 (reverse)	0– 4.0 km/h / 2.5 mph (4.8 km/h / 2.9 mph)	
Speed range 2 (reverse)	0– 6.5 km/h / 4.0 mph (7.8 km/h / 4.8 mph)	
Speed range 3 (reverse)	0–11.0 km/h / 6.8 mph (11.0 km/h / 6.8 mph)	
	* Pre-adjusted, all speed ranges can be customised on the travel joystick (memory function)	
Drawbar pull at 1.5 km/h / 0.9 mph	520 kN	610 kN
Electronic control	Electronic engine speed sensing control (load sensing feature) automatically adjusts travel speed and drawbar pull to match changing load conditions	
Steering	Hydrostatic	
Service brake	Wear-free, hydrostatic (dynamic braking)	
Automatic park brake	Wear-free, wet multiple-disc brakes, automatically applied with neutral joystick position	
Cooling system	Separate hydraulic oil cooler, hydrostatically driven and thermostatically controlled	
Filter system	Micro cartridge filters in cooling circuit	
Final drive	Heavy-duty combination spur gear with planetary gear, double sealed with electronic seal-integrity indicator	
Control	Single joystick for all travel and steering motions, as well as for counterrotation	



## Noise emissions

	PR 754	PR 764
Operator sound exposure ISO 6396	L <sub>PA</sub> = 78 dB(A) emission at the operator's position	L <sub>PA</sub> = 79 dB(A)
Exterior sound pressure 2000/14/EC	L <sub>WA</sub> = 113 dB(A) emission in the environment	L <sub>WA</sub> = 114 dB(A)



## Operator's cab

	PR 754	PR 764
Cab	Resiliently mounted cab with positive pressure ventilation, can be tilted with hand pump 40° to the rear. With integrated ROPS Rollover Protective Structure (EN ISO 3471) and FOPS Falling Objects Protective Structure (EN ISO 3449)	
Operator's seat	Comfort seat, adjustable to operator's weight	
Monitoring	Combined analogue / LC display, automatic monitoring of abnormal operating conditions	



## Undercarriage

	PR 754	PR 764
Design	Undercarriage with rigid or bogie suspension	
Mount	Via separate pivot shafts and an oscillating equaliser bar	
Chains	Lubricated single-bar grouser shoes ESS*, track chain tensioning via steel spring and grease tensioner	
Links, each side	44	44
Track rollers/carrier rollers	7/2 each side	7/2 each side
Sprocket segments	5 each side	3 each side
Track shoes standard	560 mm / 22" ESS	610 mm / 24" ESS
Track shoes optional	610 mm / 24" ESS 660 mm / 26" ESS 710 mm / 28" ESS	660 mm / 26" ESS 710 mm / 28" ESS 760 mm / 30" ESS

\* ESS Extreme Service Shoes

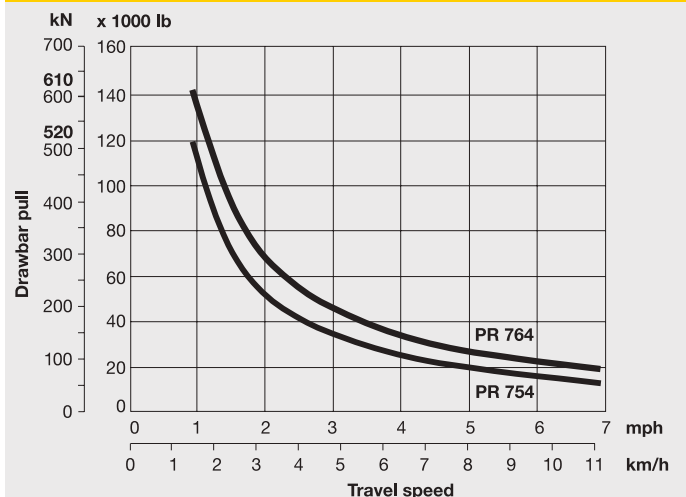


## Hydraulic system

	PR 754	PR 764
System type	Load Sensing proportional pump flow control	
Pump type	Swash plate variable displacement piston pump	
Pump flow max.	261 l/min / 57.4 gpm	352 l/min / 77.9 gpm
Pressure limitation	260 bar / 3,770 PSI	260 bar / 3,770 PSI
Control valve	2 segments, expandable to 4	
Filter system	Return filter with magnetic rod in the hydraulic tank	
Control	Single joystick for all blade functions	



## Drawbar pull PR 754/PR 764



Usable drawbar pull will depend on traction and weight of tractor

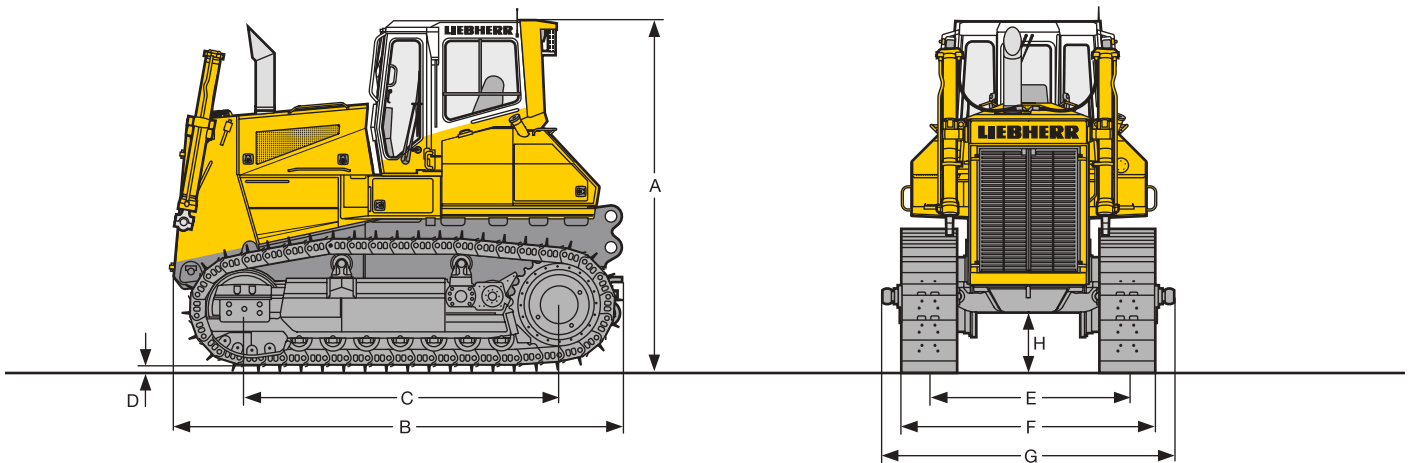
# Basic machine



## Refill capacities in Imp. gallons

	PR 754		PR 764	
Fuel tank	650 l	(143.0 gallons)	860 l	(189.2 gallons)
Cooling system	74 l	(16.3 gallons)	85 l	(18.7 gallons)
Engine oil with oil filters	43 l	(9.5 gallons)	70 l	(15.4 gallons)
Splitter box	5.5 l	(1.2 gallons)	6.4 l	(1.4 gallons)
Hydraulic tank	215 l	(47.3 gallons)	281 l	(61.8 gallons)
Final drive, each	18.5 l	(4.1 gallons)	22.5 l	(4.9 gallons)

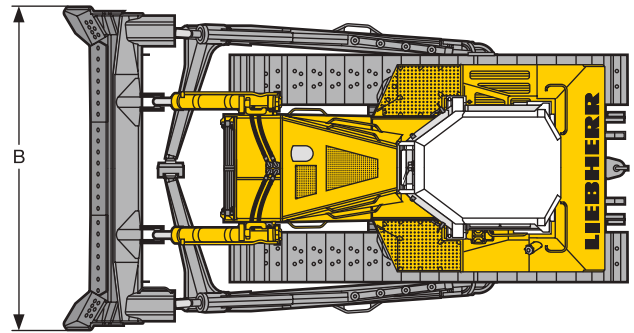
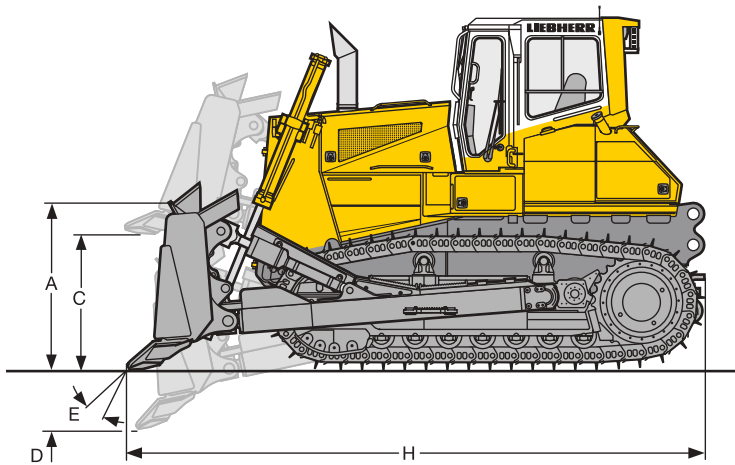
# Dimensions



Dimensions		PR 754		PR 764		
		Rigid undercarriage	Single bogie suspension	Rigid undercarriage	Single bogie suspension	Double link bogie suspension
A	Height over cab	mm	3,630		3,935	
		ft in	11'11"		12'11"	
B	Overall length without attachments	mm	4,875		5,280	
		ft in	16'0"		17'4"	
C	Distance idler/sprocket center	mm	3,174		3,540	
		ft in	10'5"		11'7"	
D	Height of grouser	mm	84		84	
		in	3.31"		3.31"	
E	Track gauge	mm	2,180		2,240	
		ft in	7'2"		7'4"	
F	Total width over tracks	mm	2,749		2,850	
		ft in	9'0"		9'4"	
G	Total width over blade-mounting trunnions	mm	3,145		3,263	
		ft in	10'4"		10'8"	
H	Ground clearance	mm	630		695	
		ft in	2'1"		2'3"	
	Tractor shipping weight <sup>1</sup>	kg	28,947	29,842	37,537	38,037
		lb	63,817	65,790	82,755	83,857
						38,437
						84,739

<sup>1</sup> Includes coolant, lubricants, 20% fuel, ROPS/FOPS cab and track shoes 560 mm/22" for PR 754, track shoes 610 mm/24" for PR 764.

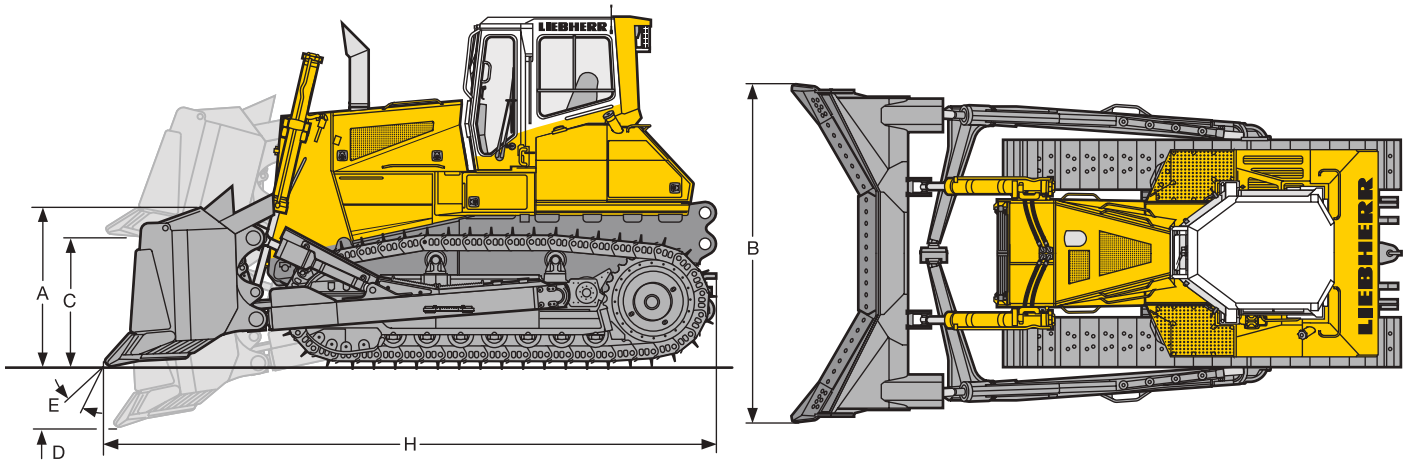
# Front attachment



	Semi-U blade	PR 754		PR 764		
		Rigid undercarriage	Single bogie suspension	Rigid undercarriage	Single bogie suspension	Double link bogie suspension
Blade capacity according to ISO 9246	m <sup>3</sup> yd <sup>3</sup>	8.9 11.64			13.6 17.79	
A Height of blade	mm ft in	1,650 5'5"			1,950 6'5"	
B Width of blade	mm ft in	4,030 13'3"			4,370 14'4"	
C Lifting height	mm ft in	1,400 4'7"			1,480 4'10"	
D Depth below ground	mm ft in	570 1'10"			647 2'1"	
E Max. blade pitch		10°			9.4°	
Max. blade tilt	mm ft in	972 3'2"			1,028 3'4"	
H Overall length	mm ft in	6,448 21'2"			7,022 23'	
Operating weight <sup>1</sup> with track shoes 560 mm / 22"	kg lb	34,990 77,140	35,885 79,113	-	-	-
Ground pressure <sup>1</sup> with track shoes 560 mm / 22"	kg/cm <sup>2</sup> PSI	0.98 13.94	1.01 14.36	-	-	-
Operating weight <sup>1</sup> with track shoes 610 mm / 24"	kg lb	35,225 77,658	36,120 79,631	44,720 98,591	45,220 99,693	45,620 100,575
Ground pressure <sup>1</sup> with track shoes 610 mm / 24"	kg/cm <sup>2</sup> PSI	0.91 12.94	0.93 13.22	1.04 14.79	1.05 14.93	1.06 15.09
Operating weight <sup>1</sup> with track shoes 710 mm / 28"	kg lb	35,695 78,694	36,590 80,667	45,400 100,090	45,900 101,192	46,300 102,074
Ground pressure <sup>1</sup> with track shoes 710 mm / 28"	kg/cm <sup>2</sup> PSI	0.79 11.23	0.81 11.52	0.90 12.81	0.91 12.94	0.92 13.08
Operating weight <sup>1</sup> with track shoes 760 mm / 30"	kg lb	-	-	45,680 100,707	46,180 101,809	46,580 102,691
Ground pressure <sup>1</sup> with track shoes 760 mm / 30"	kg/cm <sup>2</sup> PSI	-	-	0.85 12.09	0.86 12.23	0.87 12.37

<sup>1</sup> Includes coolant, lubricants, 20% fuel, ROPS/FOPS cab, semi-U blade, operator

# Front attachment

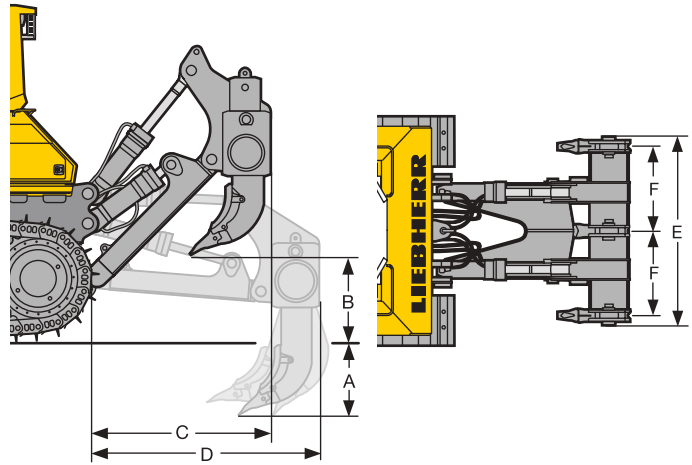
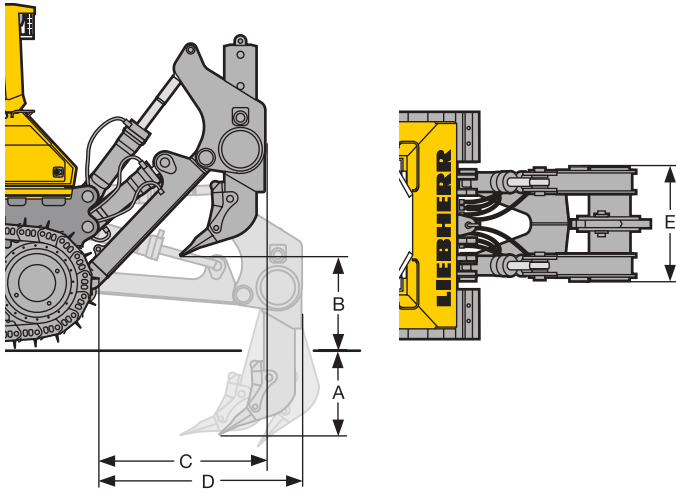


	<b>U blade *</b>	<b>PR 754</b>		<b>PR 764</b>		
		<b>Rigid undercarriage</b>	<b>Single bogie suspension</b>	<b>Rigid undercarriage</b>	<b>Single bogie suspension</b>	<b>Double link bogie suspension</b>
Blade capacity according to ISO 9246	m <sup>3</sup> yd <sup>3</sup>	11.7 15.3		17.0 22.23		
A Height of blade	mm ft in	1,650 5'5"		1,950 6'5"		
B Width of blade	mm ft in	4,325 14'2"		4,650 15'3"		
C Lifting height	mm ft in	1,400 4'7"		1,480 4'10"		
D Depth below ground	mm ft in	570 1'10"		647 2'1"		
E Max. blade pitch		10°		9.4°		
Max. blade tilt	mm ft in	1,043 3'5"		1,094 3'7"		
H Overall length	mm ft in	6,915 22'8"		7,549 24'9"		
Operating weight <sup>1</sup> with track shoes 560 mm / 22"	kg lb	36,090 79,565	36,985 81,538	–	–	–
Ground pressure <sup>1</sup> with track shoes 560 mm / 22"	kg/cm <sup>2</sup> PSI	1.02 14.50	1.04 14.79	–	–	–
Operating weight <sup>1</sup> with track shoes 610 mm / 24"	kg lb	36,325 77,878	37,220 82,056	45,570 100,465	46,070 101,567	46,470 102,449
Ground pressure <sup>1</sup> with track shoes 610 mm / 24"	kg/cm <sup>2</sup> PSI	0.94 13.37	0.96 13.65	1.06 15.07	1.07 15.22	1.08 15.36
Operating weight <sup>1</sup> with track shoes 710 mm / 28"	kg lb	36,795 81,119	37,690 83,092	46,250 101,964	46,750 103,066	47,150 103,948
Ground pressure <sup>1</sup> with track shoes 710 mm / 28"	kg/cm <sup>2</sup> PSI	0.82 11.66	0.84 11.94	0.92 13.08	0.93 13.22	0.94 13.37
Operating weight <sup>1</sup> with track shoes 760 mm / 30"	kg lb	–	–	46,530 102,581	47,030 103,683	47,430 104,565
Ground pressure <sup>1</sup> with track shoes 760 mm / 30"	kg/cm <sup>2</sup> PSI	–	–	0.86 12.23	0.87 12.37	0.88 12.51

\* Counterweight or rear attachment is recommended for improved performance and balance.

<sup>1</sup> Includes coolant, lubricants, 20% fuel, ROPS/FOPS cab, U blade, operator.

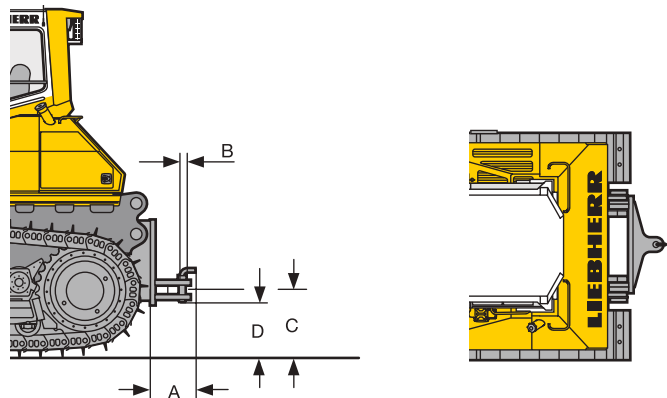
# Rear attachment



		<b>Ripper single-shank</b>		
		<b>Parallelogram with hydraulic pitch adjustment</b>	<b>PR 754</b>	<b>PR 764</b>
A	Ripping depth (max./min.)	mm ft in	1,201 / 421 3'11" / 1'5"	1,300 / 476 4'3" / 1'7"
B	Lifting height (max./min.)	mm ft in	1,040 / 260 3'5" / 10"	1,000 / 260 3'3" / 10"
C	Overall length, attachment raised	mm ft in	1,821 6'0"	1,894 6'3"
D	Overall length, attachment lowered	mm ft in	2,374 7'9"	2,494 8'2"
E	Ripper width	mm ft in	1,330 4'4"	1,400 4'7"
	Max. shank pitch		31°	31°
	Maximum penetration force	kN lb	118.2 26,563	166.9 37,507
	Pryout force	kN lb	208.8 46,924	291.5 65,509
	Weight	kg lb	3,631 8,005	4,786 10,551

		<b>Ripper multi-shank</b>		
		<b>Parallelogram with hydraulic pitch adjustment</b>	<b>PR 754</b>	<b>PR 764</b>
A	Ripping depth (max./min.)	mm ft in	791 / 476 2'7" / 1'7"	900 / 520 2'11" / 1'8"
B	Lifting height (max./min.)	mm ft in	985 / 670 3'3" / 2'2"	1,038 / 658 3'5" / 2'2"
C	Overall length, attachment raised	mm ft in	1,821 6'0"	1,894 6'3"
D	Overall length, attachment lowered	mm ft in	2,374 7'9"	2,494 8'2"
E	Toolbar width	mm ft in	2,434 8'0"	2,494 8'2"
F	Distance between shanks	mm ft in	1,100 3'7"	1,130 3'8"
	Max. shank pitch		31°	31°
	Maximum penetration force	kN lb	120.4 27,057	176.4 39,642
	Pryout force	kN lb	208.8 46,924	291.5 65,509
	Weight	kg lb	4,725 10,417	6,160 13,580

		<b>Drawbar Rigid</b>		
		<b>PR 754</b>	<b>PR 764</b>	
A	Additional length	mm ft in	463 1'6"	434 1'5"
B	Socket pin diameter	mm in	60 2.36"	60 2.36"
C	Height of jaw	mm ft in	619 2'0"	678 2'3"
D	Ground clearance	mm ft in	466 1'6"	528 1'9"
	Jaw opening	mm in	105 4.13"	105 4.13"
	Weight	kg lb	660 1,455	750 1,653



		<b>PR 754</b>	<b>PR 764</b>	
	<b>Counterweight</b>			
	Counterweight	kg lb	4,000 8,818	5,000 11,023
	Counterweight with storage compartment	kg lb	3,500 7,716	-

# Equipment



## Basic machine

Tow switch	•
Towing hitch rear	•
Towing lug front	•
Battery compartment, lockable	•
Belly pans, heavy-duty	•
Radiator, wide-meshed	•
Radiator guard, heavy-duty	•
Radiator guard, hinged	•
LiDAT Plus – Data transmission system	•
Liebherr diesel engine	•
Fan, hydraulically driven	•
Fan guard	•
Engine cover, perforated	•
Engine doors, perforated	•
Engine doors, hinged, lockable	•
Lugs for crane lifting	•
Fuel water separator	•
Air filter, dry-type, dual step	•
Pre-cleaner with automatic dust ejector	•
Toolkit	•
Forestry equipment	+
Landfill equipment	+
Filling with bio-degradable hydraulic oil	+
Tank guard, complete	+
Refuelling pump, electric	+
Diesel particle filter	+
Special paint	+
Fuel water separator with electric heater	+



## Travel drive

Parking brake, automatic	•
Function control, automatic	•
Control, single joystick	•
Load limit control, electronic	•
Electronic control	•
Travel control, 3-speed	•
Hydrostatic travel drive	•
Inching brake pedal	•
Emergency stop	•
Oil cooler	•
Final drives planetary gear	•
Safety lever	•



## Undercarriage

Track frame, closed	•
Sprocket segments, bolted	•
Master link, two-piece	•
Tracks oil lubricated	•
Undercarriage, rigid	•
Track frames, oscillating	•
Pivot shaft, separate	•
Track shoes SESS	+
Track shoes with mud hole	+
Track guide centre part	+
Track guard	+
Undercarriage with single bogie suspension	+
Undercarriage with double link bogie suspension	(2) +
Sprocket segments with recesses	+



## Electrical system

Starter motor 7.8 kW	•
Working lights, front, 4 units	•
Working lights, rear, 2 units	•
Batteries, cold start, 2 units	•
Battery main switch, mechanical	•
On-board system 24 V	•
Alternator 80 A	•
Horn	•
Back-up alarm	+
Beacon	+
Immobiliser, electronic	+
Additional lights, rear	+
Additional lights, front, on lift cylinders, 4 units	+



## Operator's cab

Storage compartment	•
Armrests 3D adjustable	•
Pressurised cab with air filter	•
Operator's seat, 6-way adjustable	•
Dome light	•
Coat hook	•
ROPS/FOPS	•
Rear mirror, inside	•
Safety glass, tinted	•
Windshield washer system	•
Windshield wipers front, rear and doors with intermittent function	•
Sliding window, left	•
Sun visor	•
Socket 12 V	•
Warm water heating	•
Operator's seat, air-suspended	+
Fire extinguisher	+
Air conditioning	+
FM radio	+
Radio preinstallation	+
Sliding window, right	+
Protective grids for windows	+
Extension, seat back	+



## Control and warning lights

Display travel speed range (digital)	•
Engine coolant temperature gauge (analogue)	•
Fuel gauge (analogue)	•
Hour meter (analogue)	•
Warning light battery charging	•
Warning light diesel engine	•
Warning light electronic travel control system	•
Warning light final drive seal, each side	•
Warning light parking brake	•
Warning light fuel water separator	•
Warning light fan control	•
Warning light pump replenishing pressure	•
Warning light float position blade	•
Warning light oil return filter	•
Warning light air filter	•
Warning light diesel engine preheating	•
Main warning light	•
Warning light hydraulic oil temperature	+



## Hydraulic system

Variable flow pump, load sensing	•
Oil filter in hydraulic tank	•
Blade quick drop	•
Control valve for 2 circuits	•
Float position blade	•
Hydraulic servo control	•
Hydraulic control ripper	+
Hydraulic control winch	+
Hydraulic tank oil level warning light	+



## Attachments

Mounting plate for external tools	+
Drawbar rear, rigid	+
Counterweight, rear	+
Ripper, 1 shank	+
Ripper, 3 shanks	+
Semi-U blade	+
U blade	+
Winch	+
Spill guard for blade	+

• = Standard  
 + = Option  
 (1) = only PR 754  
 (2) = only PR 764

Options and/or special attachments, supplied by vendors other than Liebherr, are only to be installed with the knowledge and approval of Liebherr to retain warranty.